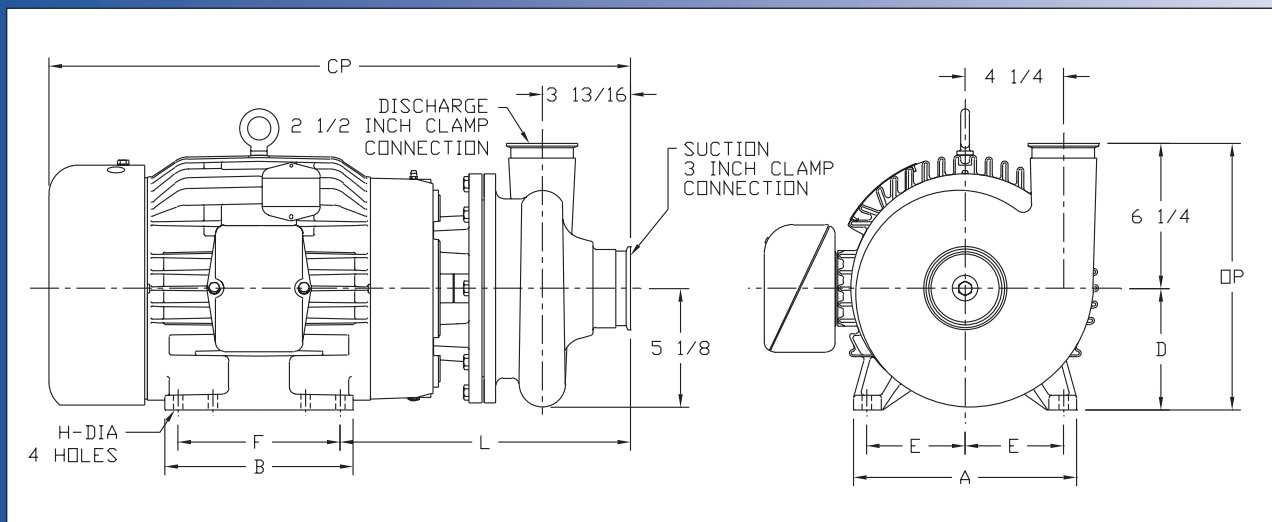
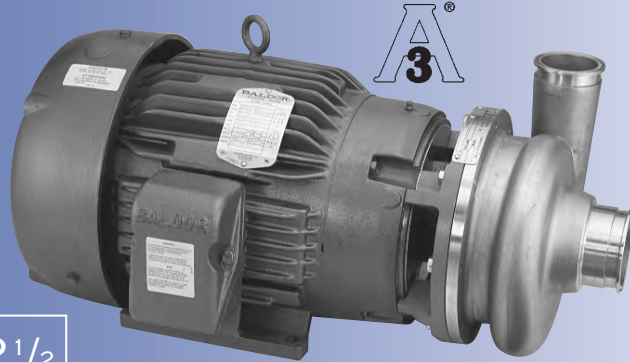


# Ampco Centrifugal Pumps

## DATA SHEET

MODEL DC2/DCH2 3X2 1/2  
MODEL DC3/DCH3 3X2 1/2



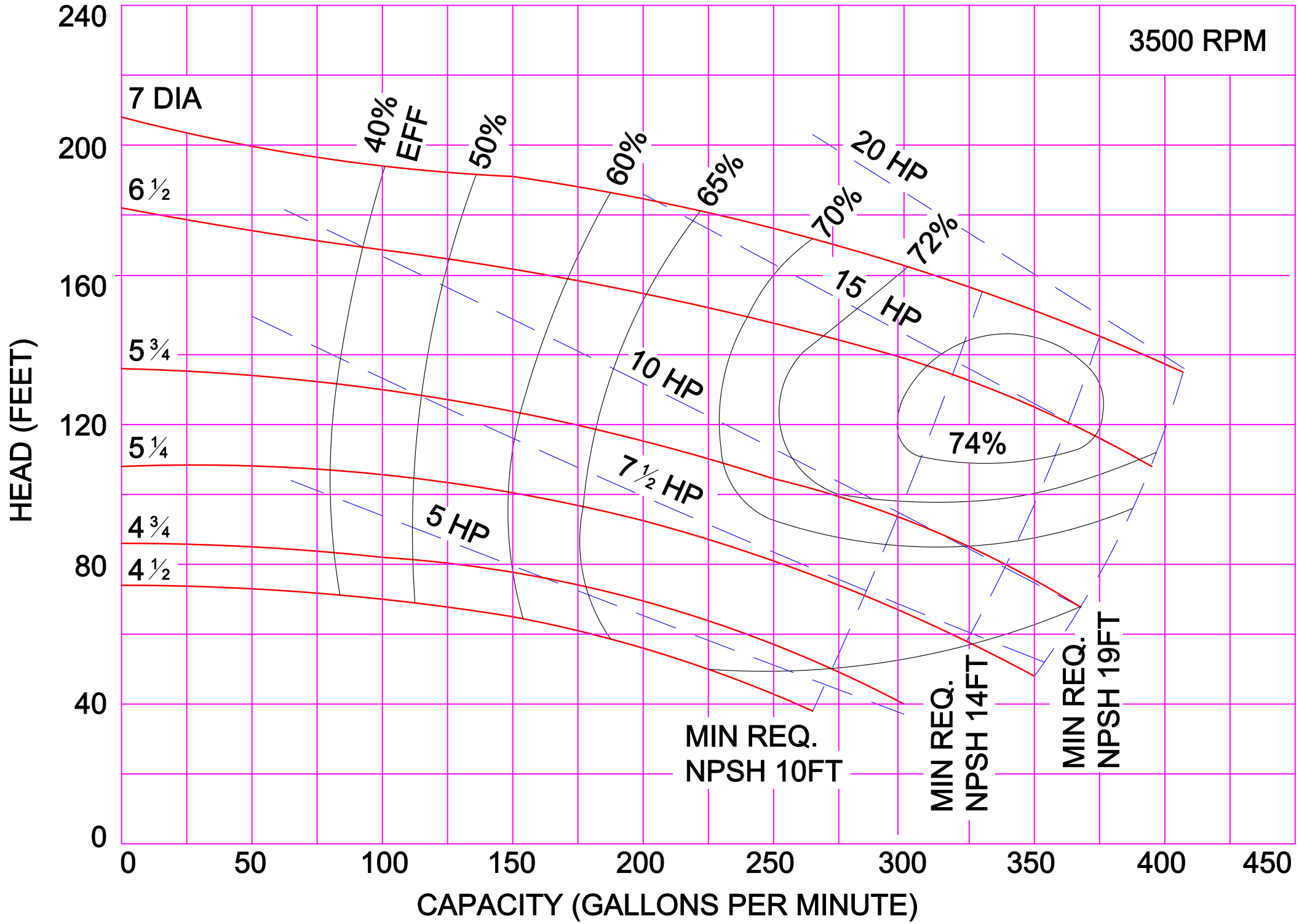
	TEFC MOTOR			DIMENSIONS IN INCHES (For Reference Only)									APPROX. WEIGHT (LBS)
	HP	RPM	FRAME	A (typ)	B (typ)	D	E	F	H	L	CP	OP	
DC2	1	1750	143JM	6-1/2	6	3-1/2	2-3/4	4	11/32	11-5/32	19-15/32	9-3/4	115
DC2	1-1/2	1750	145JM	6-1/2	6	3-1/2	2-3/4	5	11/32	11-5/32	19-15/32	9-3/4	119
DC2	2	1750	145JM	6-1/2	6	3-1/2	2-3/4	5	11/32	11-5/32	19-15/32	9-3/4	125
DC2	3	1750	182JM	8-5/8	6-1/2	4-1/2	3-3/4	4-1/2	13/32	11-25/32	20-27/32	10-3/4	143
DC2	5	3500	184JM	8-5/8	6-1/2	4-1/2	3-3/4	4-1/2	13/32	11-25/32	22-7/32	10-3/4	161
DC2	7-1/2	3500	213JM	9-5/8	8-1/8	5-1/4	4-1/4	5-1/2	13/32	12-25/32	25-3/32	11-1/2	224
DC2	10	3500	215JM	9-5/8	8-1/8	5-1/4	4-1/4	7	13/32	12-25/32	25-3/32	11-1/2	242
DCH2	15	3500	254JM	11-1/2	9-3/4	6-1/4	5	8-1/4	17/32	14-9/32	27-3/32	12-1/2	347
<b>DCH2</b>	<b>20</b>	<b>3500</b>	<b>256JM</b>	<b>11-1/2</b>	<b>11-1/2</b>	<b>6-1/4</b>	<b>5</b>	<b>10</b>	<b>17/32</b>	<b>14-9/32</b>	<b>28-7/8</b>	<b>12-1/2</b>	<b>385</b>
DCH2	25	3500	284JM	12-3/4	12-3/4	7	5-1/2	9-1/2	17/32	14-9/32	32-15/32	13-1/4	442

## MATERIAL SPECIFICATIONS

PART NAME	STAINLESS STEEL
Casing & Cover	316 Stainless
Impeller	316 Stainless
Motor Shaft	Steel
Shaft Sleeve	316 Stainless
Adapter	Cast Iron

AMPCO PUMPS COMPANY, INC.  
D-SERIES 3 x 2½

3500 RPM



HEAD (FEET)

CAPACITY (GALLONS PER MINUTE)

7 DIA

6½

5¾

5¼

4¾

4½

40%  
EFF

50%

60%

65%

70%

72%

74%

5 HP

10 HP

7½ HP

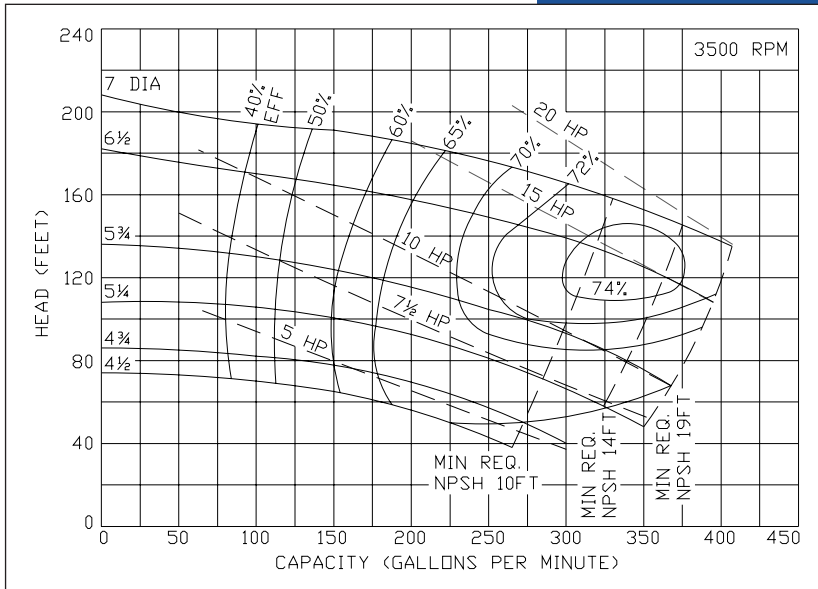
20 HP

15 HP

MIN REQ.  
NPSH 10FT

MIN REQ.  
NPSH 14FT

MIN REQ.  
NPSH 19FT



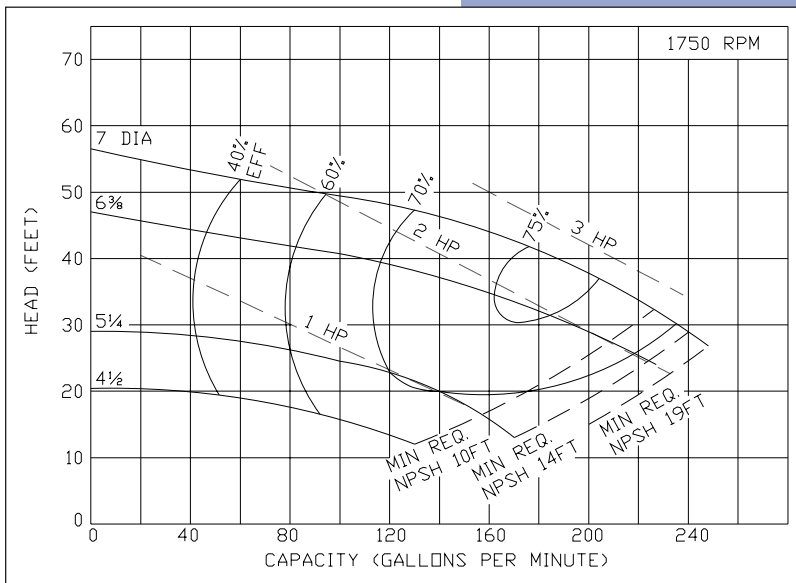
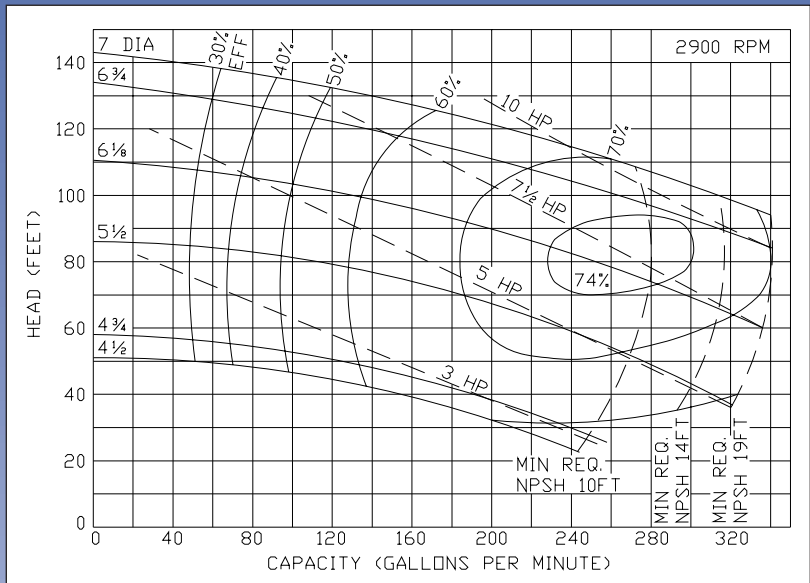
# Ampco Centrifugal Pumps

MODEL DC2/DCH2 3X2<sup>1</sup>/<sub>2</sub>  
 MODEL DC3/DCH3 3X2<sup>1</sup>/<sub>2</sub>

Curves show approximate characteristics based on clear 68° water. Rated point is guaranteed.

DC3/DCH3 pumps are in conformance with 3A sanitary standards for centrifugal and positive rotary pumps for pumping cleaning and sanitizing solutions, Number 47-00.

DC2/DCH2 pumps are also available with 150 lb. flat faced flanged connections.



# Ampco Pumps Company

4424 West Mitchell Street  
 Milwaukee, Wisconsin 53214  
 PHONE (414) 643-1852  
 FAX (414) 643-4452