

BALDOR • RELIANCE

Customer information packet

CESSWDM3613T

5HP, 3480RPM, 3PH, 60HZ, 182TC, 3636M, TEFC, F1

Class - None

Division - Not Applicable

Specifications

Enclosure	TEFC
Frame	182TC
Frame Material	Stainless Steel
Frequency	60.00 Hz
Haz Area Class and Group	None
Haz Area Division	Not Applicable
Motor Letter Type	Three Phase
Output @ Frequency	5.000 HP @ 60 HZ
Phase	3
Synchronous Speed @ Frequency	3600 RPM @ 60 HZ
Voltage @ Frequency	230.0 V @ 60 HZ 460.0 V @ 60 HZ
Agency Approvals	NEMA PREMIUM UR CSA
Ambient Temperature	40 °C
Auxillary Box	No Auxillary Box
Auxillary Box Lead Termination	None
Base Indicator	Rigid
Bearing Grease Type	Polyrex EM (-20F +300F)
Blower	None
Current @ Voltage	11.400 A @ 230.0 V 12.600 A @ 208.0 V 5.700 A @ 460.0 V
Design Code	A
Drip Cover	No Drip Cover
Duty Rating	CONT
Efficiency @ 100% Load	89.5 %
Electrically Isolated Bearing	Not Electrically Isolated
Feedback Device	NO FEEDBACK
Front Shaft Indicator	None
Heater Indicator	No Heater

Part detail

Revision	D
Type	AC
Mech. spec.	36L738
Base	
Status	PRD/A
Elec. spec.	36WGQ045
Layout	36LYL738
Eff. date	02-14-2025
CD Diagram	CD0005
Poles	02
Leads	9#16
Proprietary	False
Created date	12-15-2020

High Voltage Full Load Amps	5.7 a
Insulation Class	F
Inverter Code	Inverter Ready
KVA Code	M
Lifting Lugs	No Lifting Lugs
Locked Bearing Indicator	Locked Bearing
Motor Lead Quantity/Wire Size	9 @ 16 AWG
Motor Lead Termination	Flying Leads
Motor Standards	NEMA
Motor Type	3636M
Mounting Arrangement	F1
Number of Poles	2
Overall Length	18.32 IN
Power Factor	91
Product Family	Wash Down All Stainless Steel
Pulley End Bearing Type	Ball
Pulley Face Code	C-Face
Pulley Shaft Indicator	Standard
Rodent Screen	None
Service Factor	1.15
Shaft Diameter	1.125 IN
Shaft Ground Indicator	No Shaft Grounding
Shaft Rotation	Reversible
Shaft Slinger Indicator	No Slinger
Speed	3480 rpm
Speed Code	Single Speed
Starting Method	Direct on line
Thermal Device - Bearing	None
Thermal Device - Winding	None
Vibration Sensor Indicator	No Vibration Sensor
Winding Thermal 1	None
Winding Thermal 2	None

Nameplate

NP1953B01									
CAT.NO.	CESSWDM3613T								
SPEC.	36L738Q045G1								
HP	5								
VOLTS	230/460								
AMP	11.4/5.7								
RPM	3480								
FRAME	182TC		HZ	60		PH	3		
SER.F.	1.15	CODE	M	DES	A	CLASS	F		
NEMA-NOM-EFF	89.5	PF	91						
RATING	40C AMB-CONT								
CC	010A		USABLE AT 208V				N/A		
DE	6206	ODE	6205						
ENCL	TEFC	SN							
	4:1CT 20:1VT								

AC Induction Motor Performance Data

Record # 85855

Preliminary Data Sheet

Winding: 36WGQ045-R001		Type: 3636M	Enclosure: TEFC	
Nameplate Data			460 V, 60 Hz: High Voltage Connection	
Rated Output (HP)	5	Full Load Torque	7.54 LB-FT	
Volts	230/460	Start Configuration	direct on line	
Full Load Amps	11.4/5.7	Breakdown Torque	44.8 LB-FT	
R.P.M.	3480	Pull-up Torque	28.2 LB-FT	
Hz	60 Phase	Locked-rotor Torque	36.4 LB-FT	
NEMA Design Code	A KVA Code	Starting Current	68.6 A	
Service Factor (S.F.)	1.15	No-load Current	2.16 A	
NEMA Nom. Eff.	89.5 Power Factor	Line-line Res. @ 25°C	1.97 Ω	
Rating - Duty	40C AMB-CONT	Temp. Rise @ Rated Load	87°C	
S.F. Amps	13/6.5	Temp. Rise @ S.F. Load	115°C	
		Locked-rotor Power Factor	66.3	
		Rotor inertia	0.161 lb-ft ²	

Load Characteristics 460 V, 60 Hz, 5 HP

% of Rated Load	25	50	75	100	125	150	S.F.
Power Factor	54	77	86	91	94	94	93
Efficiency	84.7	89.5	90.3	89.9	88.8	87.5	89.3
Speed	3568	3541	3512	3481	3447	3411	3461
Line amperes	2.57	3.41	4.51	5.72	7.08	8.54	6.53

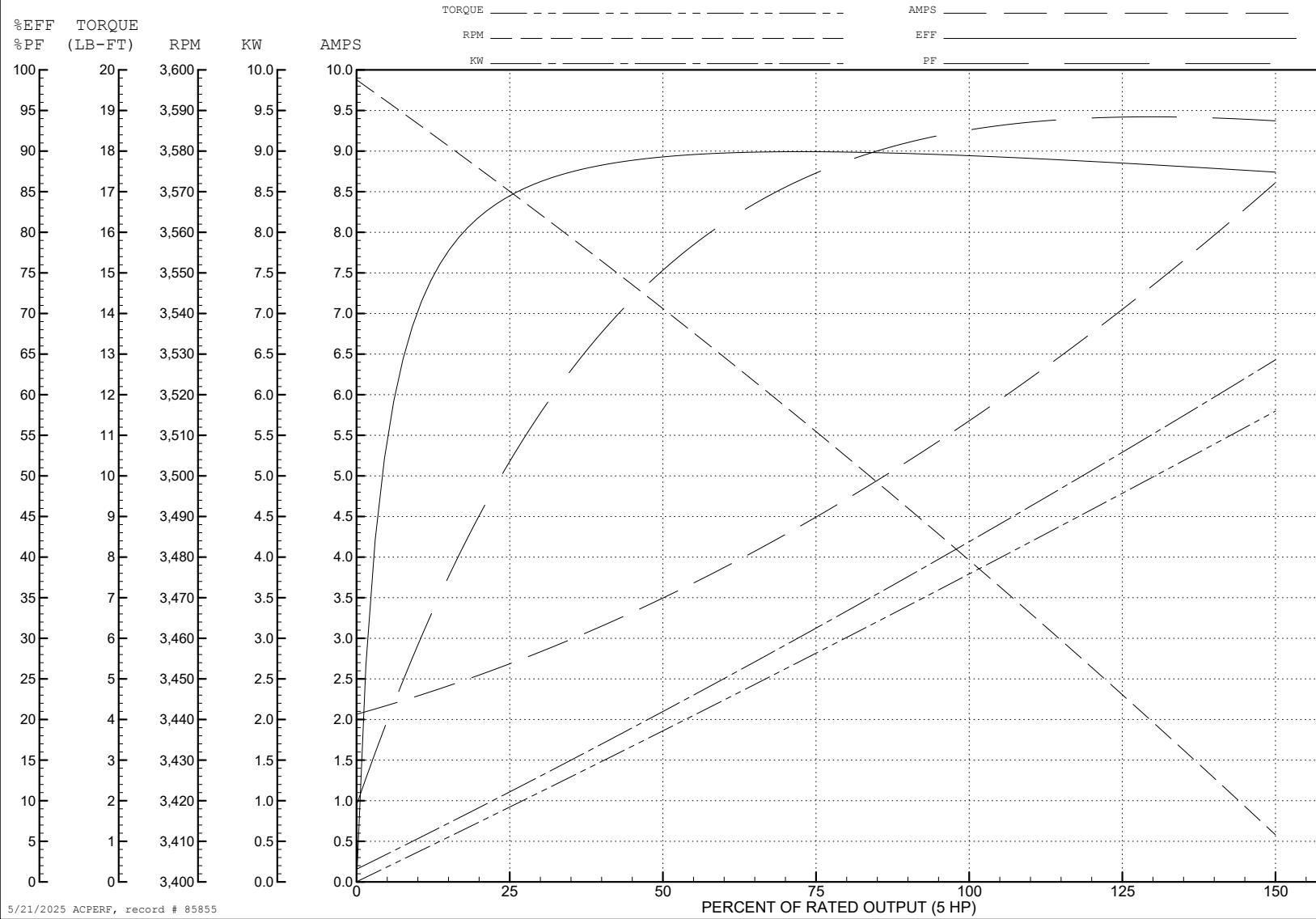
ABB Motors and Mechanical Inc.

WINDING # 36WQ045

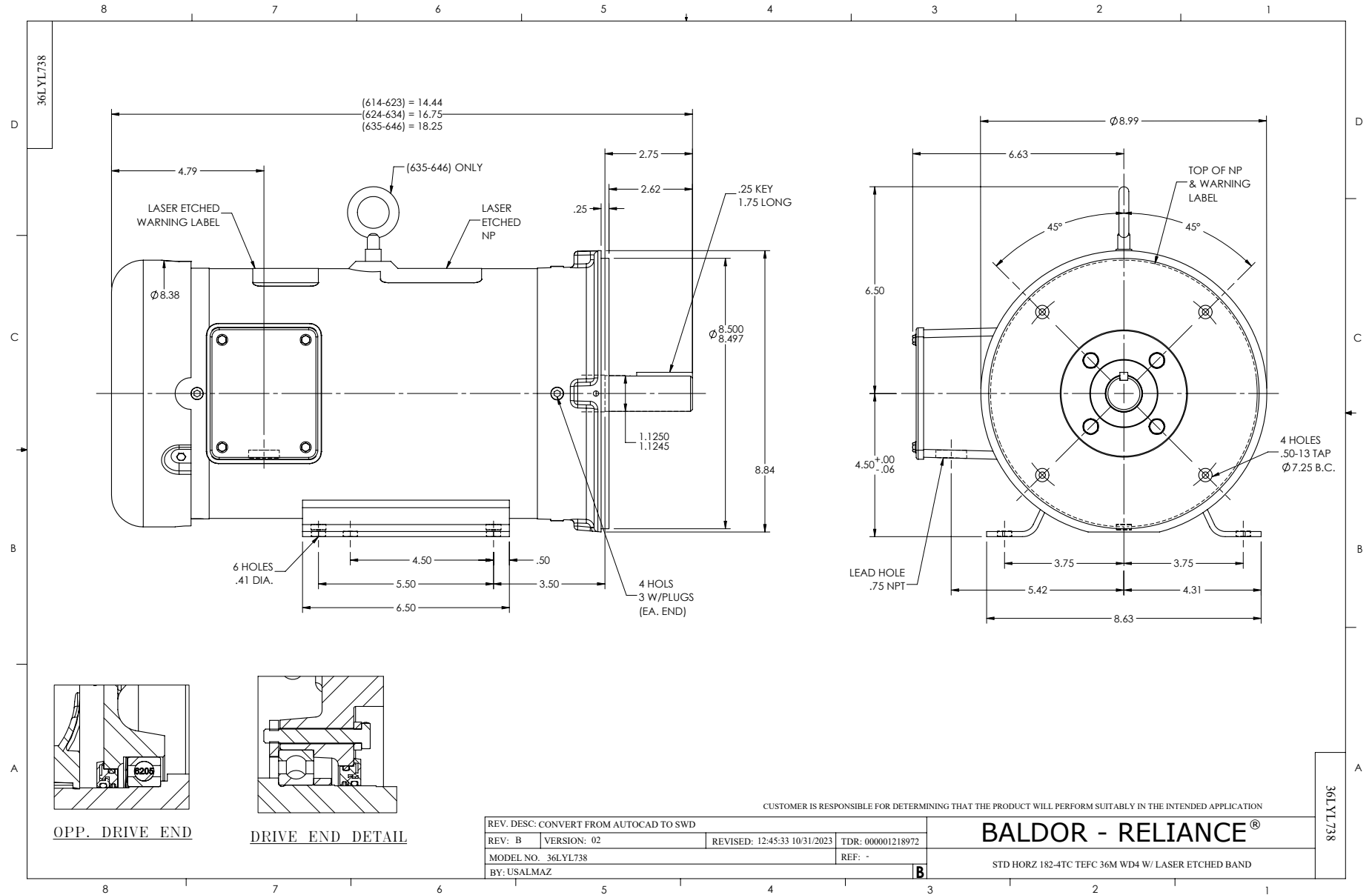
5 HP 3 PH 60 HZ 3480 RPM 460 V 3636M

Typical performance - not guaranteed values.

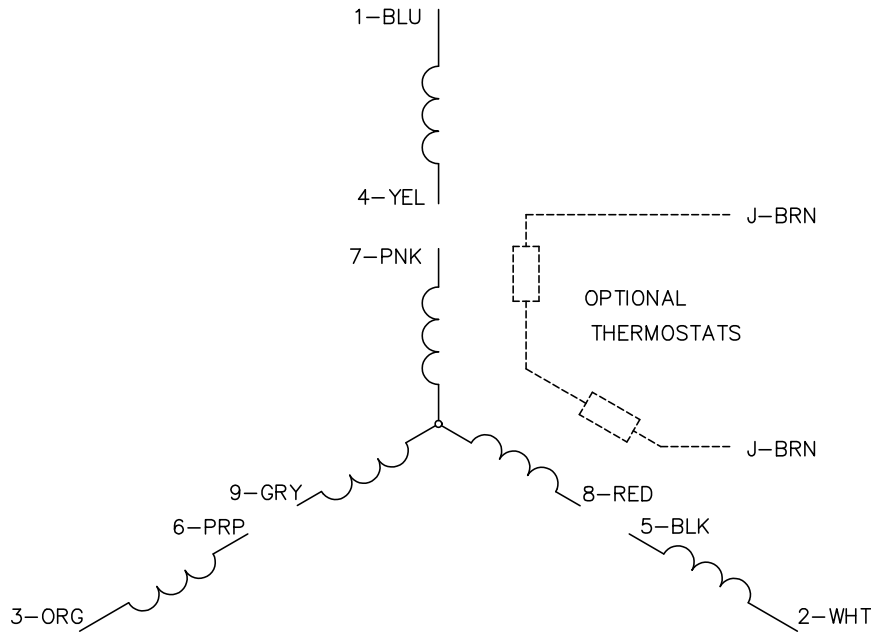
TORQUES (LB-FT): PO=44.8 PU=28.2 LR=36.4 LRA=68.6



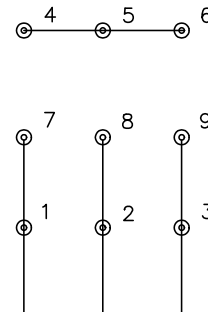
5/21/2025 ACPERF, record # 85855



CD0005

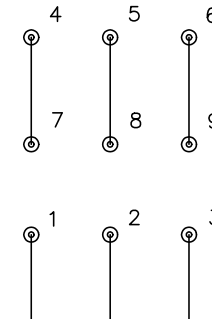


LOW VOLTAGE (2Y)



LINE

HIGH VOLTAGE (1Y)



LINE

NOTES:

1. INTERCHANGE ANY TWO LINE LEADS TO REVERSE ROTATION.
2. OPTIONAL THERMOSTATS ARE PROVIDED WHEN SPECIFIED.
3. ACTUAL NUMBER OF INTERNAL PARALLEL CIRCUITS MAY BE A MULTIPLE OF THOSE SHOWN ABOVE.
4. LEAD COLORS ARE OPTIONAL. LEADS MUST ALWAYS BE NUMBERED AS SHOWN.

CD0005

REV. DESC: REVISE TO SHOW OPTIONAL COLORS			
REV. LTR: E	BY: JLP	REVISED: 01/19/99 10:15	TDR: 0171435
S00000		FILE: AAA00005140	MDL: -
		MTL: -	

BALDOR ELECTRIC Co.

3PH, DV, 9 LEADS