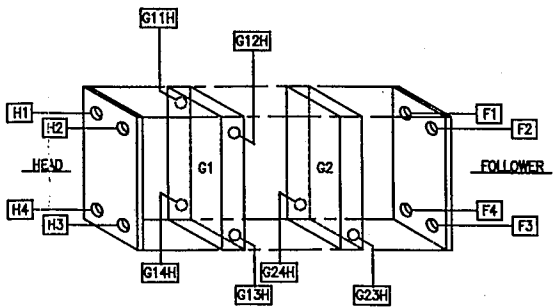
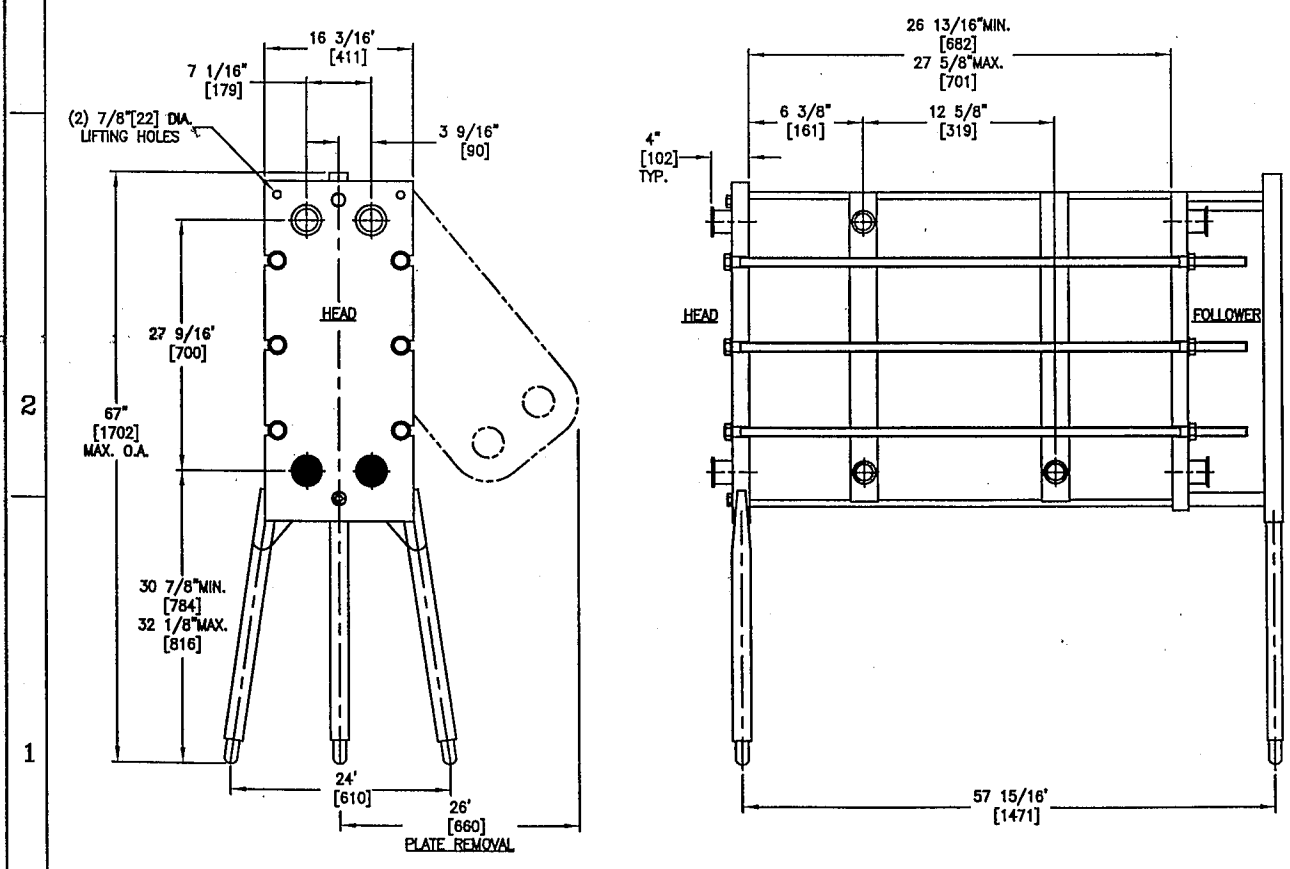
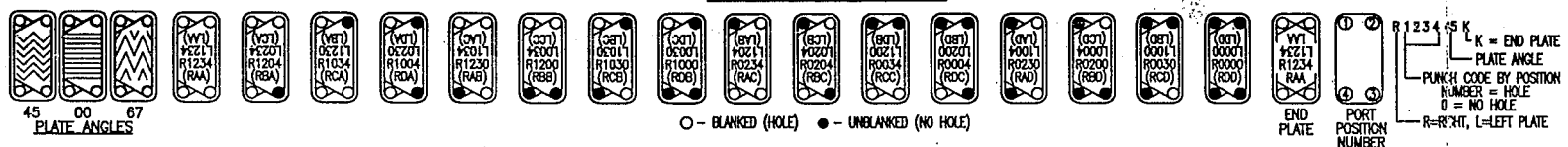


APV
 FACTORY SERVICE
 FOR PARTS AND SERVICE
 CALL OUR CUSTOMER
 SERVICE DEPARTMENT
 1-800-828-7391

PLATES MUST BE ARRANGED ALTERNATELY LEFT AND RIGHT. FOR CONVENIENCE ON THIS DRAWING, WHERE BLOCKS OF R1234 AND L1234 PLATES OCCUR, THE TOTAL NUMBER OF EACH IS GIVEN.

THE CONVENTIONS USED TO SHOW THE PLATE ARRANGEMENT HAVE CHANGED AS FOLLOWS:
 1. THE HEAD (FIXED COVER) IS NOW SHOWN ON THE LEFT OF BOTH THE ARRANGEMENT AND THE SIDE VIEW OF THE FRAME.
 2. THE PLATE PUNCH CODE IS SIMPLIFIED. SEE THE PLATE IDENTIFICATION KEY FOR DETAILS.

PLATE IDENTIFICATION
 VIEWED FROM GASKETED SIDE OF PLATE



PROCESS SPECIFICATION						DESIGN SPECIFICATIONS	
SECTION	LIQUID	FLOW RATE (LB/HR)	TEMP. IN (°F)	TEMP. OUT (°F)	ΔP (PSIG)	HEAT LOAD (BTU/HR)	DESIGN CODE
DUTY 1							
HEATER	ICE CREAM MIX	13,200	173	182	5.0	103,800	MAX. ALLOWABLE WORKING PRESSURE
	WATER	15,000	190	183.1	5.0		150 PSIG
REGEN.							
	ICE CREAM MIX	13,200	130	173	12.0	492,600	MAXIMUM OPERATING TEMPERATURE
	ICE CREAM MIX	13,200	182	139.1	12.0		239° F.
COOLER							
	ICE CREAM MIX	13,200	139.1	38	19.0	1,131,000	SERIAL NUMBER
	30XPROP. GLYCOL	80,000	30	45.1	10.0		20003003000321
DUTY 2							
HEATER	ITALIAN ICE WATER	18,000	175	182	6.9	114,600	HEAT TRANSFER AREA
	WATER	15,000	187	179.4	5.0		327.5 SQ.FT.
REGEN.							
	ITALIAN ICE WATER	18,000	130	175	14.1	732,200	FRAME SIZE
	ITALIAN ICE WATER	18,000	182	137.1	14.1		No.6
COOLER							
	ITALIAN ICE WATER	18,000	137.1	38	12.1	1,589,000	MAXIMUM FRAME CAPACITY
	30XPROP. GLYCOL	80,000	30	51.2	9.6		303 PLATES
TOTAL "L" PLATES - 93		TOTAL "R" PLATES - 90					
81 : L1234 45		76 : R1234 00					
3 : L0034 45		3 : R0234 00					
1 : L1200 45		1 : R1230 00					
2 : L1204 45		5 : R1204 00					
1 : L1034 45		4 : R1034 00					
1 : L1200 45E		1 : R0230 00					
1 : L0034 45E		- : -					
1 : L0030 45E		- : -					
2 : L120H 45		- : -					

Qty	Part Number	Description
Component Summary		
Plates		
1	1714KJXAX5ANNXA	0.5 mm S.Steel AISI 316/NBR (Nitrile) std,Clip
1	1714KEXAX5ANNXA	0.5 mm S.Steel AISI 316/NBR (Nitrile) std,Clip
1	1714KEXAX5ANNXA	0.5 mm S.Steel AISI 316/NBR (Nitrile) std,Clip
1	1714FJXAX5ANNXA	0.5 mm S.Steel AISI 316/NBR (Nitrile) std,Clip
2	1714FXAX5ANNXA	0.5 mm S.Steel AISI 316/NBR (Nitrile) std,Clip
3	1714FXAX5ANNXA	0.5 mm S.Steel AISI 316/NBR (Nitrile) std,Clip
1	1714FXAX5ANNXA	0.5 mm S.Steel AISI 316/NBR (Nitrile) std,Clip
81	1714FXAX5ANNXA	0.5 mm S.Steel AISI 316/NBR (Nitrile) std,Clip
2	G8502270 L120H	0.5 mm S.Steel AISI 316/NBR (Nitrile) std,Clip
1	1710FLXAX5ANNXA	0.5 mm S.Steel AISI 316/NBR (Nitrile) std,Clip
3	1710FXAX5ANNXA	0.5 mm S.Steel AISI 316/NBR (Nitrile) std,Clip
1	1710FDXAX5ANNXA	0.5 mm S.Steel AISI 316/NBR (Nitrile) std,Clip
4	1710FBXAX5ANNXA	0.5 mm S.Steel AISI 316/NBR (Nitrile) std,Clip
5	1710FXAX5ANNXA	0.5 mm S.Steel AISI 316/NBR (Nitrile) std,Clip
76	1710FXAX5ANNXA	0.5 mm S.Steel AISI 316/NBR (Nitrile) std,Clip
Gaskets		
12	17XXR00000GN0XA	Ring NBR (Nitrile) std / Paracil Port
Frame		
1	TSR25SLZ426A	SR25sl No:6
Grids		
1	TGZSR2ZZZZA	G1 Grid
1	TGZSR2ZZZZA	G1 Grid
Fitting		
8	T025JEXATONA	HEAD/FOLL 2.5in 316L SS TRI-CLAMP ASSY
3	T025MEXATONA	H3,H4,F3 PORT SUPPORT ASSY
2	T020JEXAHUNA	G1H,G12H 2in 316L SS TRI-CLAMP BOSS ASSY
2	T020JEXAHUNA	G13H,G14H 2in 316L SS TRI-CLAMP BOSS ASSY
2	T29655	G21H,G22H SOLID BOSS ASSY
1	T020JEXAHUNA	G24H 2in 316L SS TRI-CLAMP BOSS ASSY
1	TBZSRZHTAMA	G24H PRESSURE SWITCH ASSY
Accessory Description		
1	TB72044	OPEN END WRENCH
1	TB72001	RATCHET WRENCH

- NOTES**
- THE INSTALLATION, OPERATION AND MAINTENANCE OF THIS HEAT EXCHANGER SHALL BE IN ACCORDANCE WITH THE APV PARAFLOW PLATE HEAT EXCHANGER INSTRUCTION MANUAL.
 - THIS MODEL HEAT EXCHANGER IS TIGHTENED USING A WRENCH ON THE TIE BAR HEX NUTS AT THE HEAD AND FOLLOWER ENDS. CLEAN AND LUBRICATE THE THREADS BEFORE OPENING OR CLOSING USING A LUBRICANT COMPATIBLE WITH STAINLESS STEEL. RECOOL A.S.P. OR NEVER-SEIZ BLACK MOLY LUBE. DO NOT USE COMMON GREASE. THE PLATE PACK IS TO BE TIGHTENED IN ACCORDANCE WITH THE INSTRUCTION MANUAL SUPPLIED. DO NOT TIGHTEN BELOW THE MINIMUM DIMENSION SHOWN.
 - THE CUSTOMER IS RESPONSIBLE FOR PROVIDING:
 - PROTECTION AGAINST START UP OR OPERATING PRESSURES EXCEEDING THE MAXIMUM ALLOWABLE WORKING PRESSURE.
 - PIPING TO THE FOLLOWER OR CONNECTOR GRIDS THAT ALLOWS FOR FREE MOVEMENT WHEN THE UNIT IS OPENED FOR SERVICE AND PROVIDES FLEXIBILITY FOR THE VARIATION OF THE COMPRESSED PLATAGE DIMENSIONS.
 - DIMENSIONS ARE SHOWN IN INCHES. DIMENSIONS IN BRACKETS [] ARE IN MILLIMETERS.
 - STANDARD TOLERANCES:
 FRAME AND BALL FEET LOCATIONS: ±1/4 INCH [±6mm]
 NOZZLE CENTERLINE AND FACE DIMENSIONS: ±1/8 INCH [±3mm]

Customer: _____

P. O. NO.: _____

APV AMERICAS
 1200 W. Ash Street
 Goldsboro, N.C. 27533-2048
 Tel: (919) 735-4570/Fax: (919) 731-2351

CONFIDENTIALITY NOTE: THE INFORMATION CONTAINED HEREIN IS OF A CONFIDENTIAL NATURE AND IS THE PROPERTY OF APV GROUP, INC. IT IS TO BE USED ONLY FOR THE PURPOSES SPECIFIED HEREIN. IT IS NOT TO BE REPRODUCED, PHOTOGRAPHED, OR REPRODUCED IN ANY MANNER NOR USED FOR ANY PURPOSES WITHOUT THE WRITTEN PERMISSION OF APV GROUP, INC. TOWNSHEN, N.Y. USA.

Description: **SR25SL #6 PLATE HEAT EXCHANGER**

Checked: Date: KFW 4-5-00
 Approved: Date: _____

Supervised: _____
 Drawn: Date: 4-5-00

Scale: N.T.S.
 Drawing No.: 0000321

Sheet: 1 OF 1
 Rev. 00

CAD File: 0000321