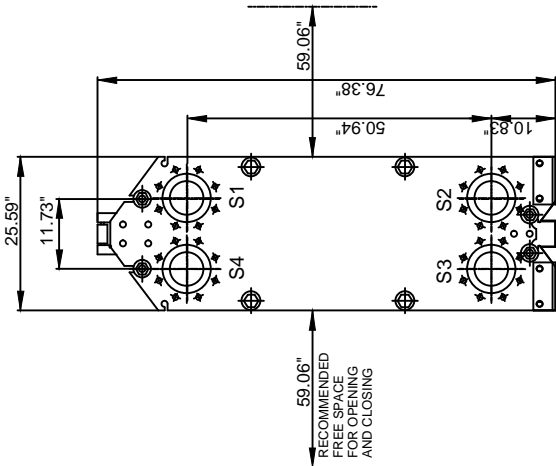


This is a general drawing. Additional parts, if required, like protection sheets, inspection covers, etc. are not displayed.

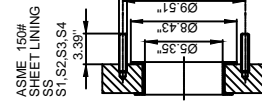
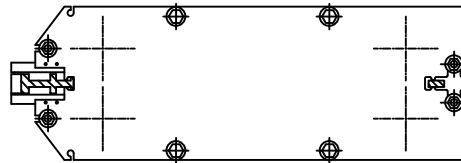
Designed constructed and stamped in accordance with 2013 ASME Code

**FRAME PLATE
(FIXED)**



**PRESSURE PLATE
(MOVABLE)**

SECTION A-A



REMARKS:	SIDE 1	SIDE 2
DESIGN PRESSURE	150 psi	150 psi
TEST PRESSURE	195 psi	195 psi
MAX TEMPERATURE	250 °F	250 °F
MIN TEMPERATURE	32 °F	32 °F
MAWP	150 psi	150 psi
MDMT	-20 °F	

GASKET	NBRB CLIP-ON
PLATE MATERIAL	ALLOY 316
PLATE THICKNESS	0.50 mm
HEATING SURFACE	1261 ft²
PLATE GROUPING	1* (78MH+17L)/1* (78ML+17L)
WEIGHT WITH WATER	4075 lb
NET WEIGHT	3427 lb

TOTAL LENGTH 80.9"
TOTAL WIDTH 25.6"
TOTAL HEIGHT 76.4"

ALL DIMENSIONS IN INCHES

SIDE	MEDIA	INLET	TEMP.	OUTLET	TEMP.	FLOW RATE	PRESSURE DROP	LIQUID VOL.
1	Water	S1	105.0 °F	S2	90.0 °F	1150.0 GPM	9.799 psi	5.25 ft³
2	Water	S3	85.0 °F	S4	99.9 °F	1150.0 GPM	9.696 psi	5.25 ft³

SUPPLIER	REF. 88773-10	ITEM NO.
AGENT / REF. / 7911983		
CUSTOMER NAME / REF. NO. Rowlands Sales Company, Inc. / 85086		
SIGN. LTE		RISK CATEGORY N/A

PLATE HEAT EXCHANGER

M15-BFG

ASME

SERIAL NUMBER 30116-94682	
DATE 2015-11-19	REV NO. 0