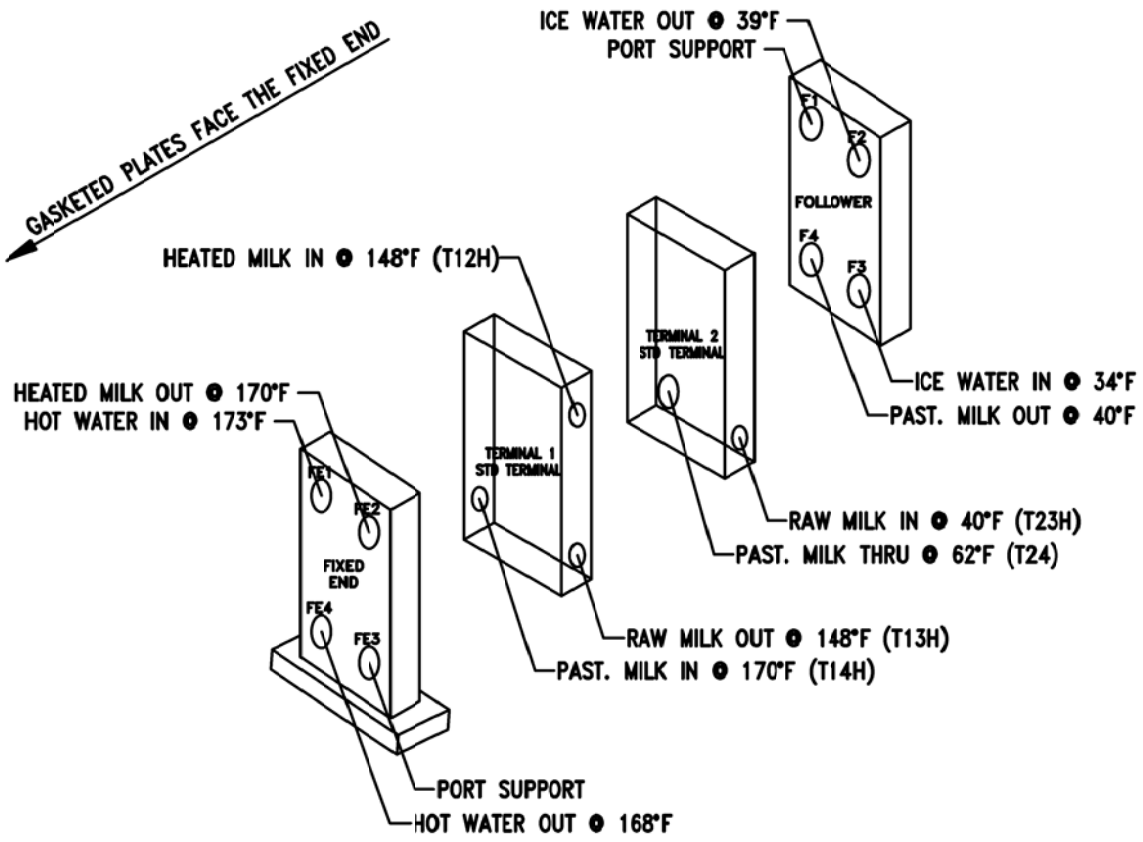


MODEL: SR25SL, SIZE 3
PRO2PLUS PLATE HEAT EXCHANGER



NOTE

THIS DRAWING REPLACES THE ORIGINAL 10316.

AGC FIXED END REQUIRES 4 PRO2 PORT GASKETS, ALL OTHERS ARE SR2 THICK PORT GASKETS.

PRO2PLUS A PLATES

0.6MM 316 SS W/ NBR

1204L + A- 1	1204RX + A- 1
L + A- 26	R + A- 32
1034L + A- 3	1034R + A- 1
0230L + A- 1	0200R + A- 1
1230L + A- 3	0034RX + A- 1
12d4L + A- 2	1230R + A- 3
0234L + A- 3	0034R + A- 2
1004L + A- 1	0004RX + A- 1
	0234R + A- 1

L + A = 1234L + A
R + A = 1234R + A
'd' DENOTES 1/8" DRAIN HOLE

TOTAL = 83 PLATES

CONNECTIONS

FIXED END & FOLLOWER:
2-1/2" TRI-CLAMP

TERMINALS:
2-1/2" TRI-CLAMP

HOLD UP

HEATER: 3 US GAL
REGENERATOR: 5 US GAL
COOLER: 3 US GAL

MODEL: SR25SL, SIZE 3

PRO2PLUS PLATE HEAT EXCHANGER

DUTY

FLUID	FLOW	TEMP.	PRES. DROP
HEATER			
HEATED MILK	1000 GAL/HR	148°F-170°F	8 PSI
HOT WATER	72 GAL/MIN	173°F-168°F	11 PSI
REGENERATOR			
RAW MILK	1000 GAL/HR	40°F-148°F	15 PSI
PAST. MILK	1000 GAL/HR	170°F-62°F	15 PSI
COOLER			
PAST. MILK	1000 GAL/HR	62°F-40°F	8 PSI
ICE WATER	80 GAL/MIN	34°F-39°F	18 PSI

TIGHTENING INSTRUCTIONS

THIS MODEL HEAT EXCHANGER IS DESIGNED TO OPERATE WITH METAL TO METAL CONTACT BETWEEN PLATES. THIS MACHINE MUST ALWAYS BE TIGHTENED TO A "DEAD HARD" CONDITION BEFORE OPERATION. THE PLATE DIMENSION SHOWN IS NOMINAL ONLY. TOLERANCES IN PLATES CAN VARY ±0.005"/0.13MM PER PLATE. PIPING TO FOLLOWER AND TERMINAL PORTS MUST ALLOW FOR FREE MOVEMENT WHEN FRAME IS OPENED.

TIGHTEN UNIT TO -- START 13 9/16" --
MINIMUM 13 3/16" -- OVERALL AS MEASURED
FROM THE INSIDE OF THE FIXED END TO THE
INSIDE OF THE FOLLOWER.

CAUTION

THIS UNIT MUST BE COOLED BELOW 90°F/32°C AND RELIEVED OF PRESSURE PRIOR TO OPENING.



AGC HEAT TRANSFER

WESTERN FACTORY 9109 SE 64TH AVENUE PORTLAND, OR 97206 800.715.8820 503.774.7342 FAX 503.774.2550
EASTERN FACTORY 10129 PIPER LANE BRISTOW, VA 20136 800.825.8820 703.257.1660 FAX 703.330.7940

DATE:	05/23/18
DRAWN BY:	ELDER
CHECKED BY:	MEININGER
SERIAL NO.:	07193

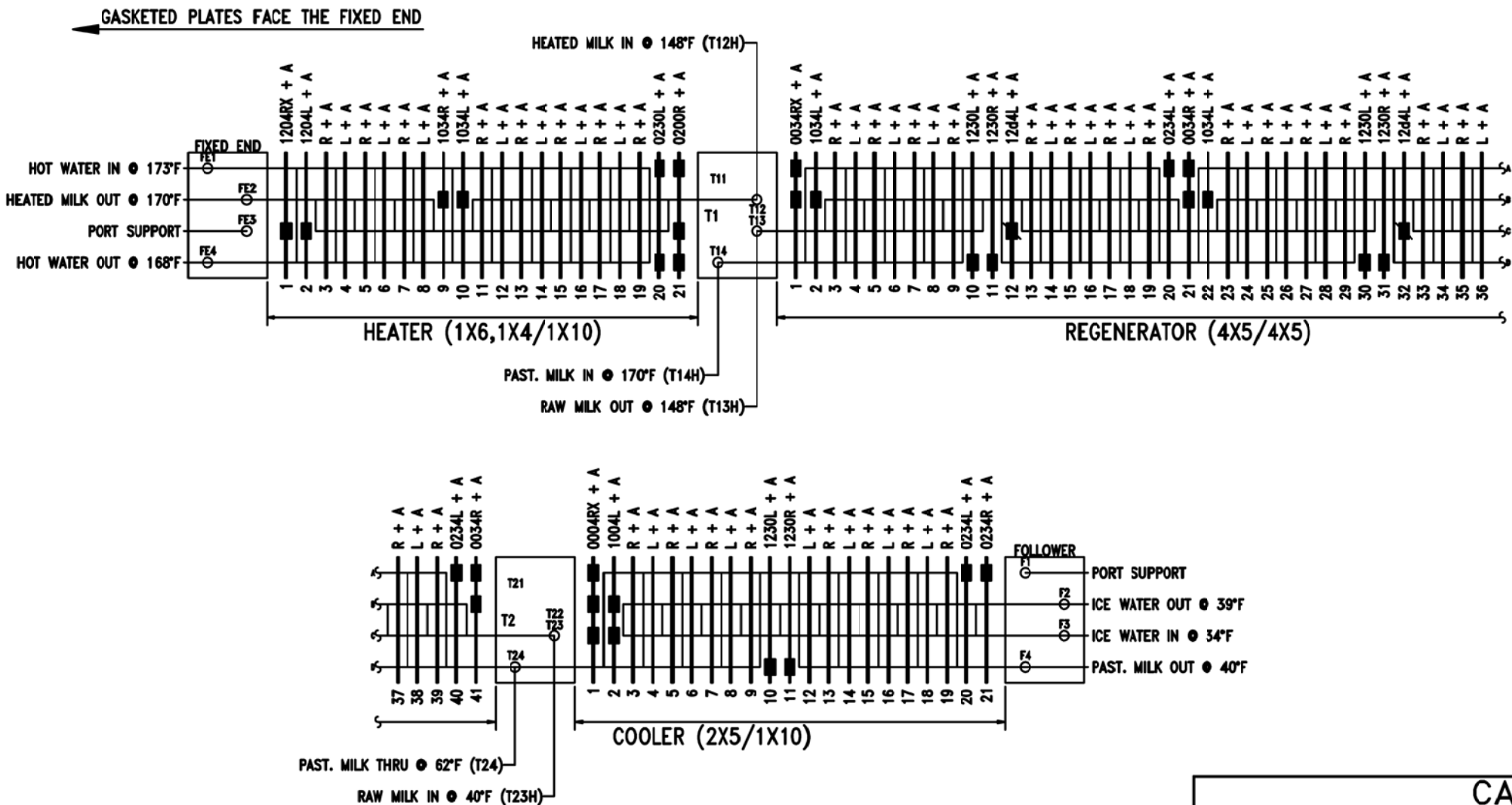
COAST LINE SUPPLY
SACRAMENTO, CA

DRAWING NUMBER: AGC07193
(10316)
SHEET 1 of 3

NOTE: THIS DRAWING IS THE CONFIDENTIAL PROPERTY OF AGC HEAT TRANSFER, AND IT MUST NOT BE REPRODUCED IN ANY FORM WITHOUT WRITTEN CONSENT.

REV.	DATE	DESCRIPTION
-	2007	AGC REPLACEMENT FIXED END S/N 07193 INSTALLED ON SR25SL 10316 FRAME

MODEL: SR25SL, SIZE 3
PR02PLUS PLATE HEAT EXCHANGER



CAUTION

THIS UNIT MUST BE COOLED BELOW 90°F/32°C AND RELIEVED OF PRESSURE PRIOR TO OPENING.



AGC HEAT TRANSFER

WESTERN FACTORY 9109 SE 64TH AVENUE
PORTLAND, OR 97206
800.715.8820
503.774.7342
FAX 503.774.2550

EASTERN FACTORY 10129 PIPER LANE
BRISTOW, VA 20136
800.825.8820
703.257.1660
FAX 703.330.7940

DATE:
DRAWN BY: ELDER
CHECKED BY: MEININGER
SERIAL NO.: 07193

COAST LINE SUPPLY
SACRAMENTO, CA

DRAWING NUMBER: AGC07193
(10316)

SHEET 2 of 3

NOTE: THIS DRAWING IS THE CONFIDENTIAL PROPERTY OF AGC HEAT TRANSFER, AND IT MUST NOT BE REPRODUCED IN ANY FORM WITHOUT WRITTEN CONSENT.

MODEL: SR25SL, SIZE 3
PR02PLUS PLATE HEAT EXCHANGER

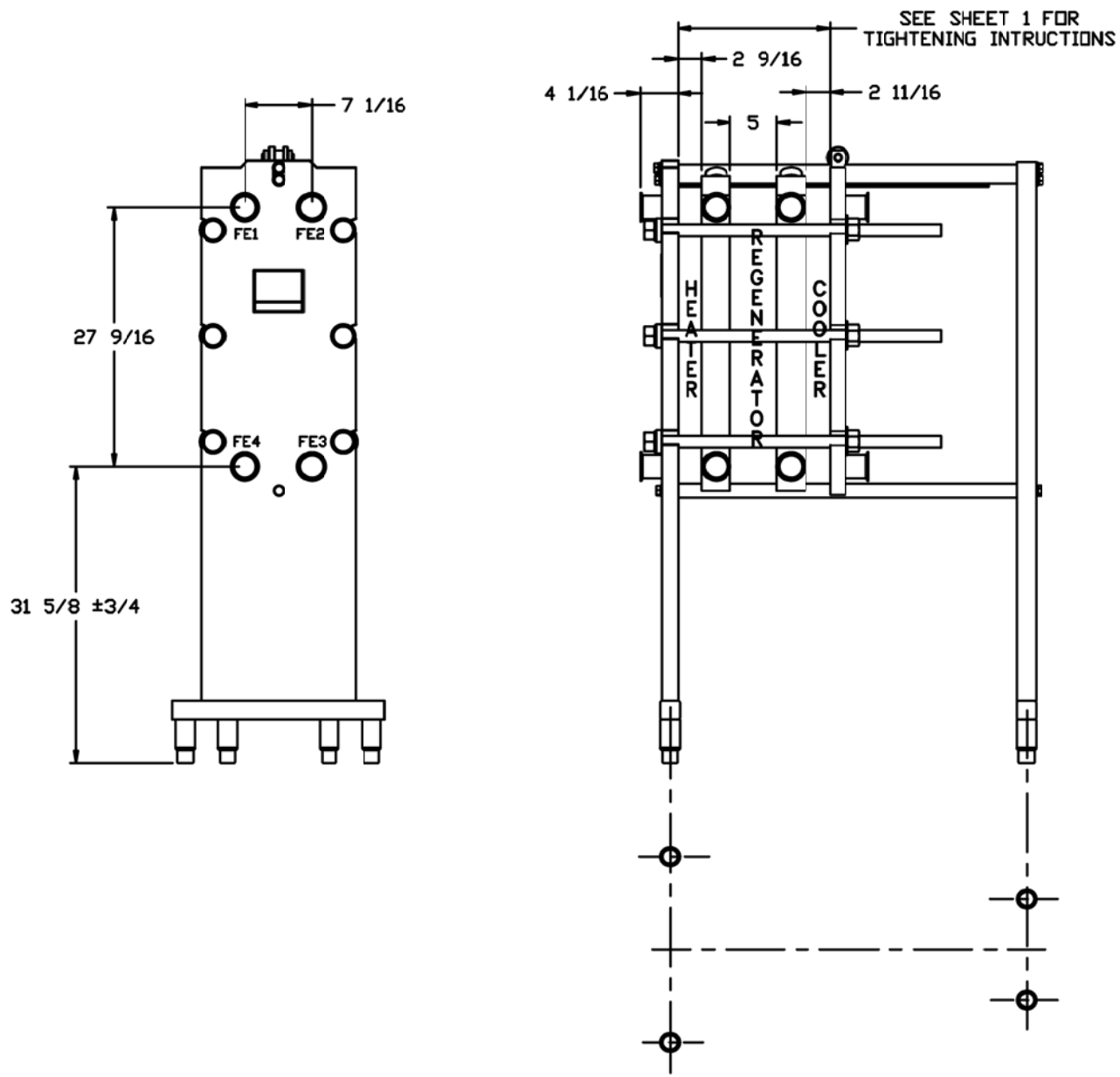



ILLUSTRATION FOR REFERENCE ONLY

NOTE: THIS DRAWING IS THE CONFIDENTIAL PROPERTY OF AGC HEAT TRANSFER, AND IT MUST NOT BE REPRODUCED IN ANY FORM WITHOUT WRITTEN CONSENT.

CAUTION	
THIS UNIT MUST BE COOLED BELOW 90°F/32°C AND RELIEVED OF PRESSURE PRIOR TO OPENING.	
	AGC HEAT TRANSFER
	<div style="display: flex; justify-content: space-between;"><div>WESTERN FACTORY 9109 SE 64TH AVENUE PORTLAND, OR 97206 800.715.8820 503.774.7342 FAX 503.774.2550</div><div>EASTERN FACTORY 10129 PIPER LANE BRISTOW, VA 20136 800.825.8820 703.257.1660 FAX 703.330.7940</div></div>
COAST LINE SUPPLY SACRAMENTO, CA	
AGC07193 (10316)	

DATE:
DRAWN BY: ELDER
CHECKED BY: MEININGER
SERIAL NO.: 07193