

NOTES

EST. WT. 1050 LBS
476.3 KG.

TOLERANCES
As Follows Unless Otherwise Specified
Decimal:
Fractional:
Angular:

MATERIAL AND FINISHES
Shell 12 GA. 304 S/S 4/2B
Mueller Temp-Plate 20 GA. 304 S/S 2B/2S
ON 12 GA. 304 S/S 4/1100
Jacket 16 GA. 304 S/S 2B/2S
Heads TOP: 12 GA. 304 S/S 4/2B
INNER BOTTOM: 12 GA. 304 S/S 4/2B, OUTER BOTTOM: 14 GA. 304 S/S 2B/2S
Insulation 2" CORKBOARD W/ FIBERGLASS IN VOIDS

WELD FINISHES
Interior GRND # RIBBON POLISH (11W)
Exterior CLEAN W/ PICKLING PASTE (11W)

SPECIFICATIONS	Heat Transfer Surface	Vessel
ASME Code	NO	NO
State Code	-	-
Imp. and Stamp	NO	NO
Design Temp. °F	400	400
Working Temp. °F	-	-
Design Press. PSIG	90	0
Working Press. PSIG	-	-
Hydrostatic Test. PSIG	-	-
Pneumatic Test. PSIG	131	-
Vacuum Test. In. Hg.	-	0
Heating Medium	STEAM	-
Cooling Medium	-	-
Radiograph	-	-

SYM.	REVISION	BY	DATE
A	CHANGED PER CUSTOMER	MH	7-15-72
B	WAS 2"	MH	10-11-72
C	ADDED LEG BRACES	MH	12-14-72

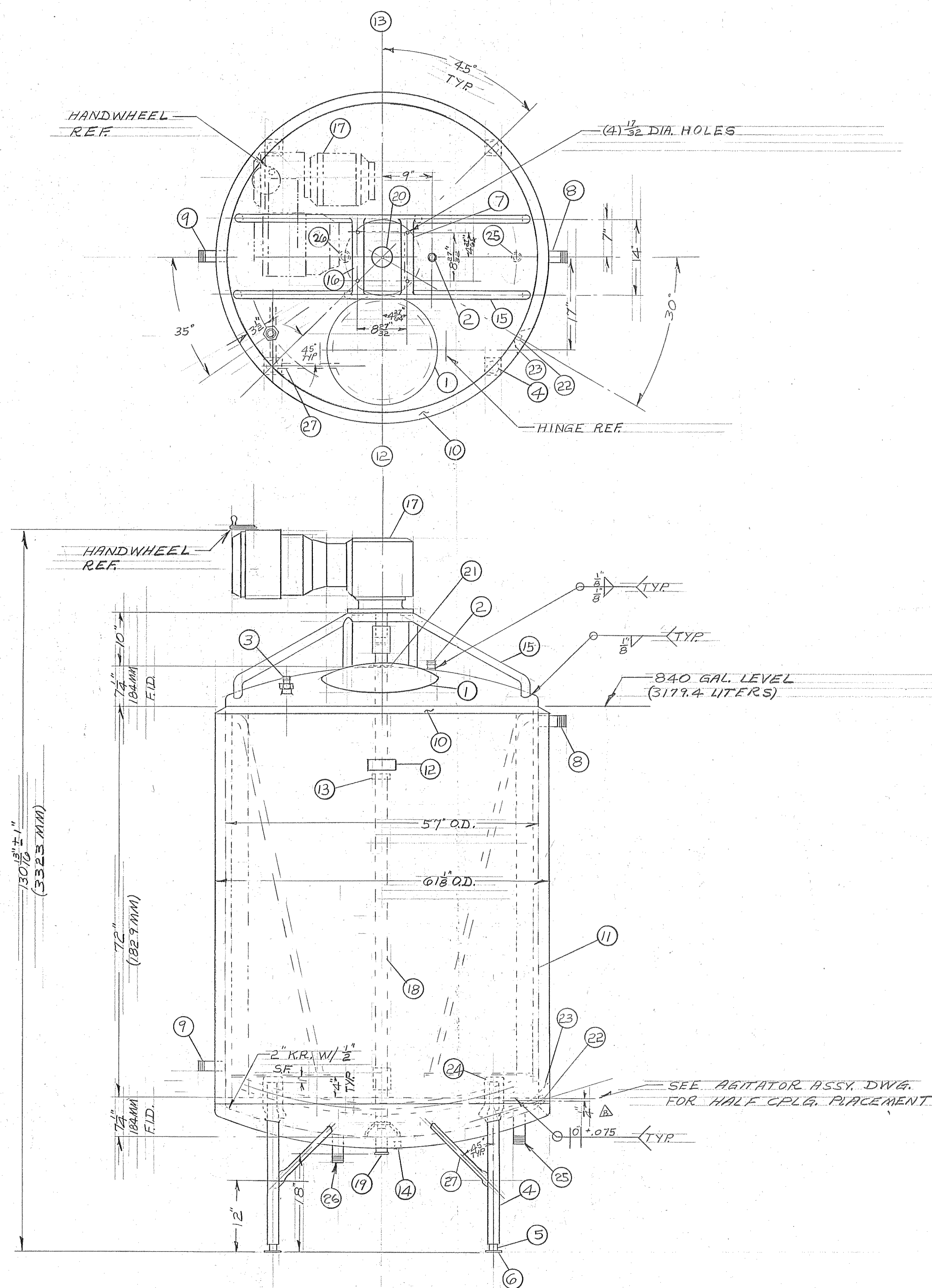
CAPACITY CHECKED BY AND
Scale 1" = 12"
Drawn M. HILTON Date 8-5-72
Checked R.E. Date 8-25-72
Approved R.E. Date 9-29-72
Customer CHESEBROUGH-POND'S
Address CLINTON, CONNECTICUT
Customer Order No. 30211

Title: 800 GAL. SPECIAL MODEL "F"
Number Required: TWO

This drawing and any print thereof is the property of the PAUL MUELLER CO., Springfield, Mo. and is subject to return on request by this company. The information shown is confidential and the recipient by accepting this drawing agrees not to use any information contained therein in any manner which will be detrimental to the Paul Mueller Co.

PAUL MUELLER COMPANY
P. O. BOX 818/SPRINGFIELD, MISSOURI, U.S.A. 65801
TELEPHONE (417) 886-8881/CABLE: MUELLER
TELEX 44-1447
CANADA: Paul Mueller (Canada) Limited
St. Marys, Ontario
EUROPE: Mueller Europa N.V.
Lichtenvoorde, Holland

WORK ORDER NO. DRAWING NO.
120541-3 PC00094 D



ITEM NO.	NO. REQ'D.	PART NO.	DESCRIPTION
1	1	16913D	MANWAY, 18" DIA.
2	1	3022	FERRULE, LISAT 304 S/S 1 1/2" SIZE
3	1		INLET, SPECIAL NO-FOAM LIKE #13702A EXCEPT 1 1/2" IAWQ CHERRY BURRELL FERRULE IN LIEU OF STANDARD
4	4		LEGS, 2" O.D. X .065 WALL 304 S/S TUBING
5	4	13940	ADJ. FEET, 304 S/S
6	4		PLATES, 14" X 3" X 3" 304 S/S
7	1		PERMANENTLY STAMP SERIAL NO.
8	1	(REF)	TEMP-PLATE INLET CONNECTION. 2" SCH 40, 304 S/S T.O.E.
9	1	(REF)	TEMP-PLATE OUTLET CONNECTION 1 1/4" SCH 40, 304 S/S T.O.E.
10	1		BREAST RING, 12 GA. 304 S/S
11	1	PC00094C	TEMP-PLATE ASSY.
12	1	3743A	NAME PLATE
13	1	15979B	DATA PLATE
14	1	14979A	VENT SCREEN
15	1		TRUSS, 1 1/4" SCH. 40 304 S/S PIPE
16	2		MOTOR MOUNT BARS 1/2" X 2" 304 S/S
17	1		VARIABLE SPEED RIGHT ANGLE MOTOR-REDUCER ASSY. 3 H.P. 4.8-48 R.P.M. OUTPUT 3/60/230-400 V.
18	1	PC00103C	VERTICAL AGITATOR ASSY., SIDE & BOTTOM SCRAPPING
19	1		FERRULE, 3" CHERRY BURRELL 14WHQ 304 S/S
20	1		3/4" DIA. SWAGED HOLE
21	1	4897	VENT SHIELD FOR AGIT. SHAFT SEE DWG. #5022C
22	1		HALF COUPLING, 3/4" 150# 304 S/S
23	1		CLEARANCE CONE, 10 GA. 304 S/S
24	4		LEG PAD, 10 GA. 304 S/S
25	1	(REF)	BOTTOM TEMP. PLATE INLET 1" SCH 40, 304 S/S PIPE, T.O.E.
26	1	(REF)	BOTTOM TEMP. PLATE OUTLET 3/4" SCH 40, 304 S/S PIPE, T.O.E.
27	8		BRACES, 1 1/8" O.D. X .049 WALL 304 S/S TUBING

PC00094