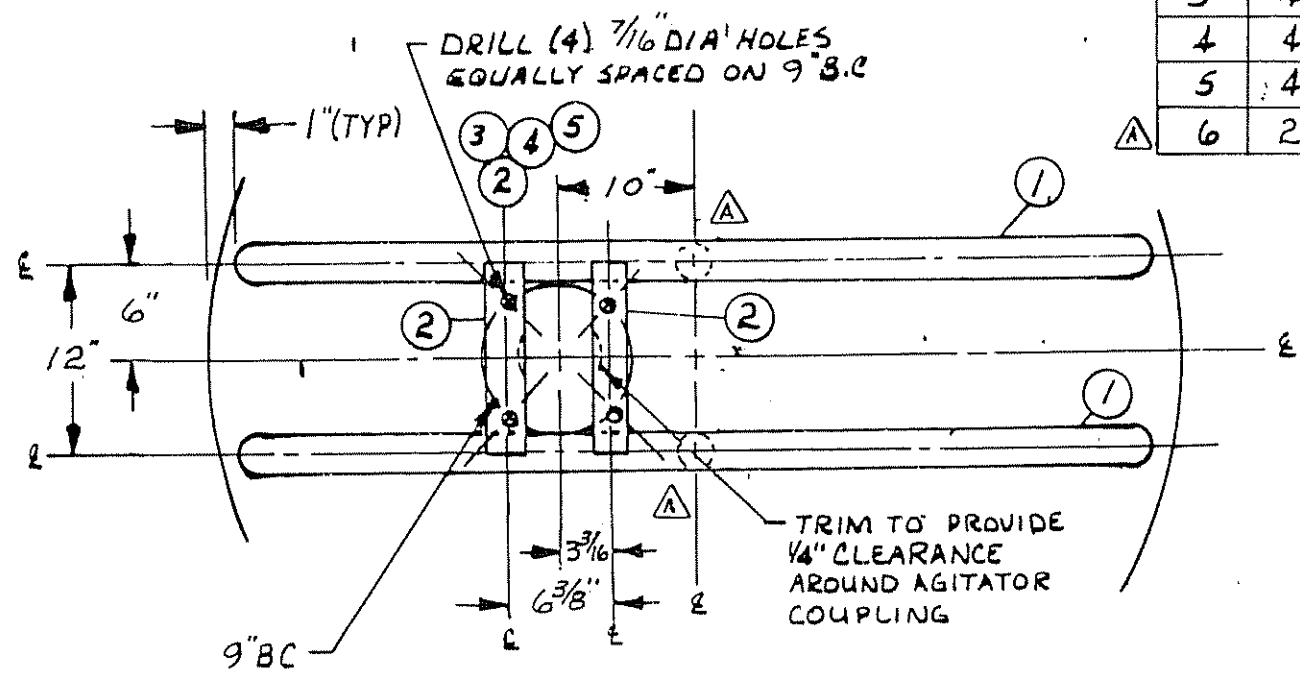
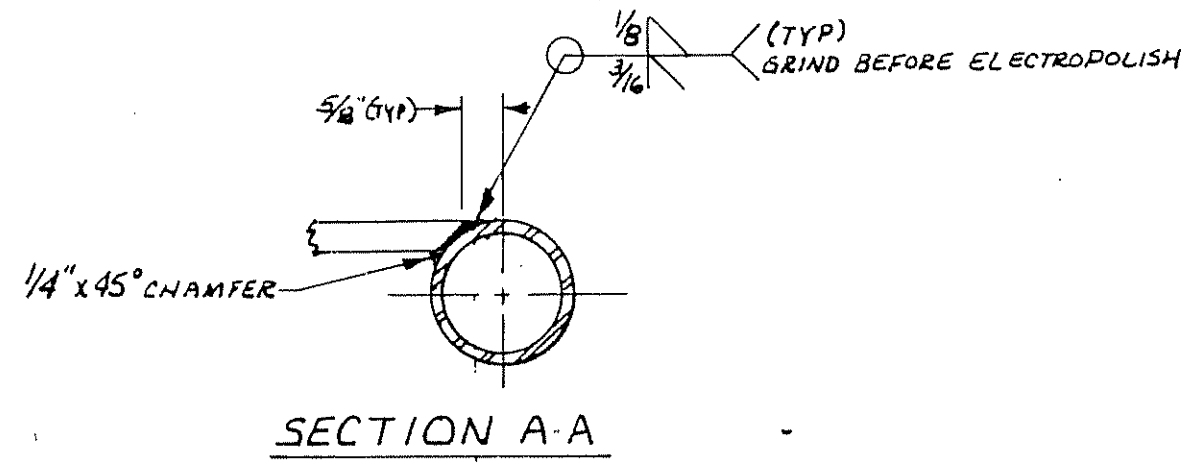
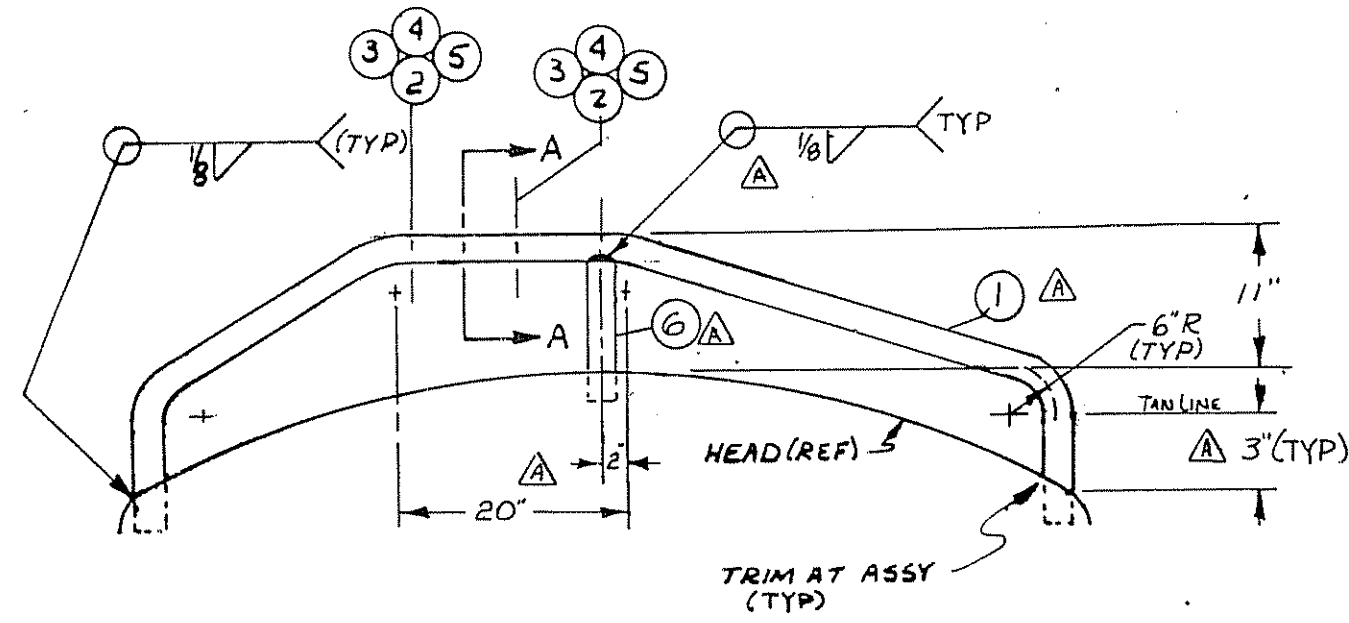




ITEM NO.	NO REQ'D.	PART NO.	DESCRIPTION	DRAWING NO.
1	2		PIPE AGITATOR TRUSS-2" SCH 40 304 <sup>3</sup> / <sub>4</sub>	
2	2		BAR-1/2" THK X 2" WIDE 304 <sup>3</sup> / <sub>4</sub>	
3	4	3204234	SCREW-CAP-3/8"-16NC X 1 3/4" LG PLATED	
4	4	3204146	NUT HEX-3/8"-16NC PLATED	
5	4	3204005	WASHER-3/8" LOCK PLATED	
6	2		BRACE-1/2" SCH 40 PIPE 304 <sup>3</sup> / <sub>4</sub>	



- NOTES:
1. ALL DIMENSIONS ARE IN INCHES
  2. USE CARE TO PRODUCE SMOOTH WELD JOINTS
  3. GRIND WELDS BEFORE ELECTROPOLISHING
  4. ENTIRE TRUSS ASSY TO BE ELECTROPOLISHED
  5. TRUSS DESIGNED FOR STERLING GEAR REDUCER MODEL NO. 5AQB75050
  6. CUSTOMER: FLEISCHMANN'S YEAST OAKLAND, CA



SYM	CHANGE	BY	DATE
A	2" WAS 2 1/2". ADD ITEM 6. ADD DIM REDESIGN TRUSS TO BENT STYLE	ARC	2/25/88

ALL MATERIALS OR COMPONENT PARTS CALLED OUT ON THIS DRAWING SHALL BE AS SPECIFIED OR APPROVED EQUAL.

This drawing and any print thereof is the property of the PAUL MUELLER CO Springfield Mo and is subject to return on request by this company. The information shown is confidential and the recipient by accepting this drawing agrees not to use any information contained thereon in any manner which will be detrimental to the Paul Mueller Co

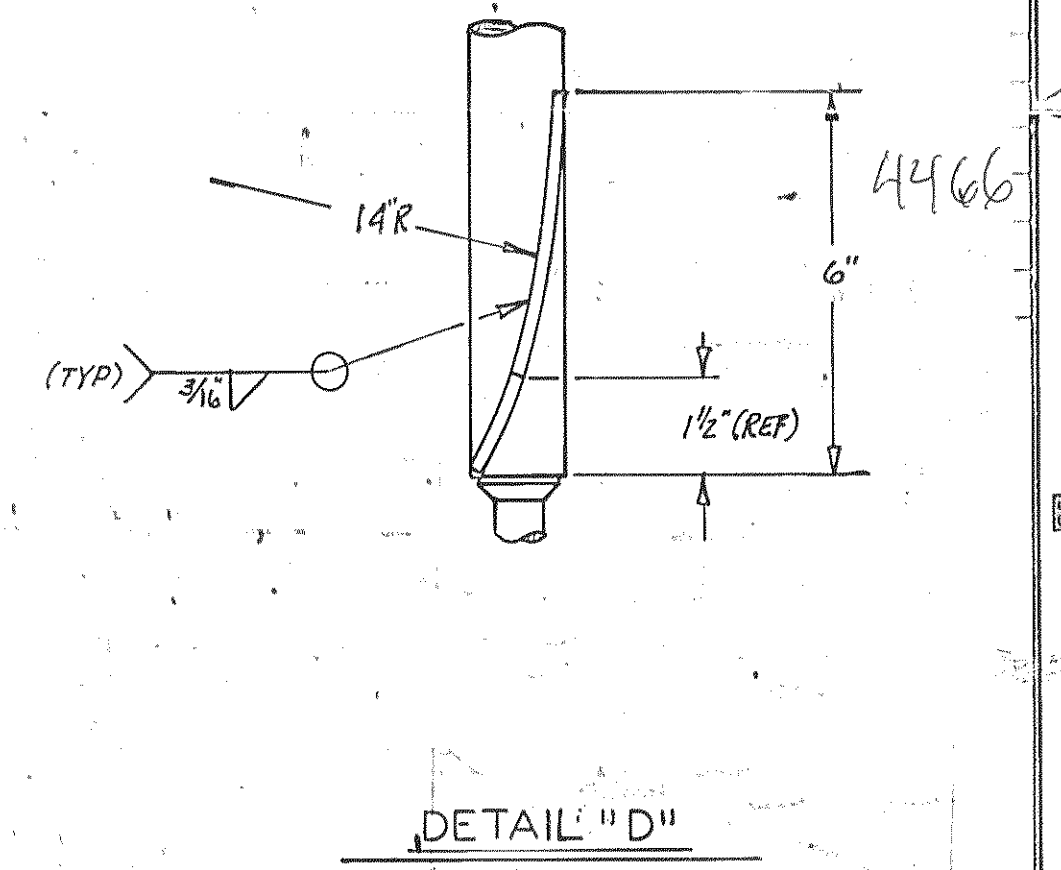
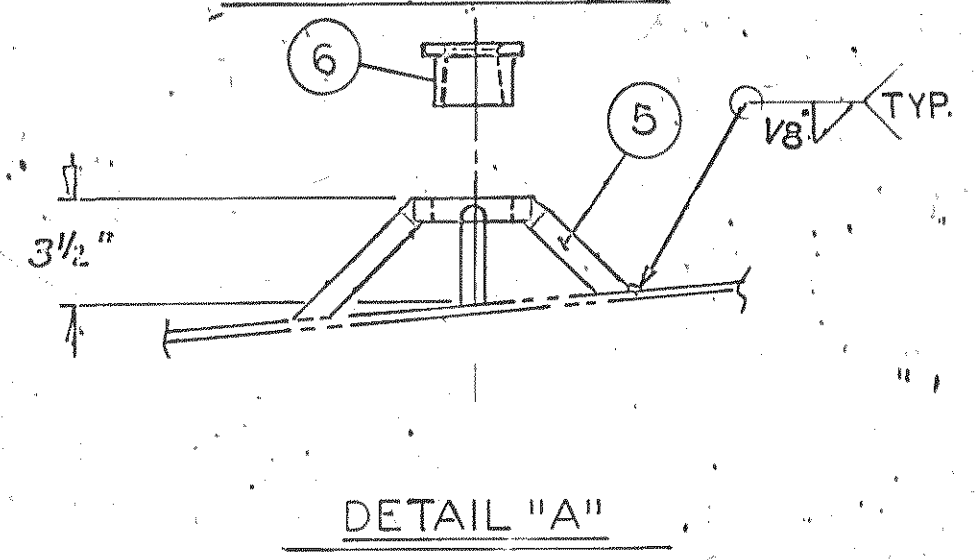
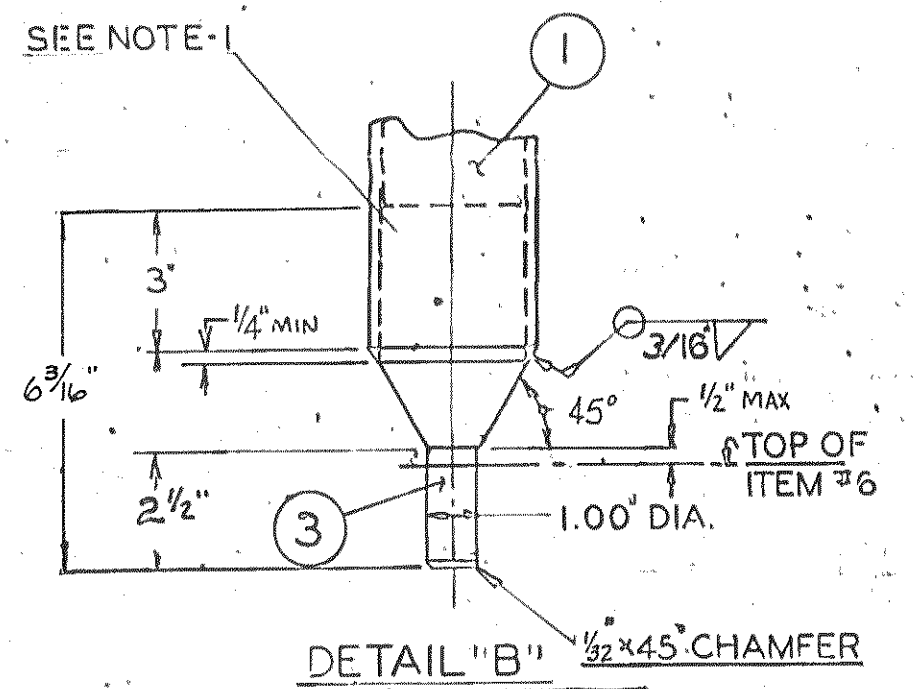
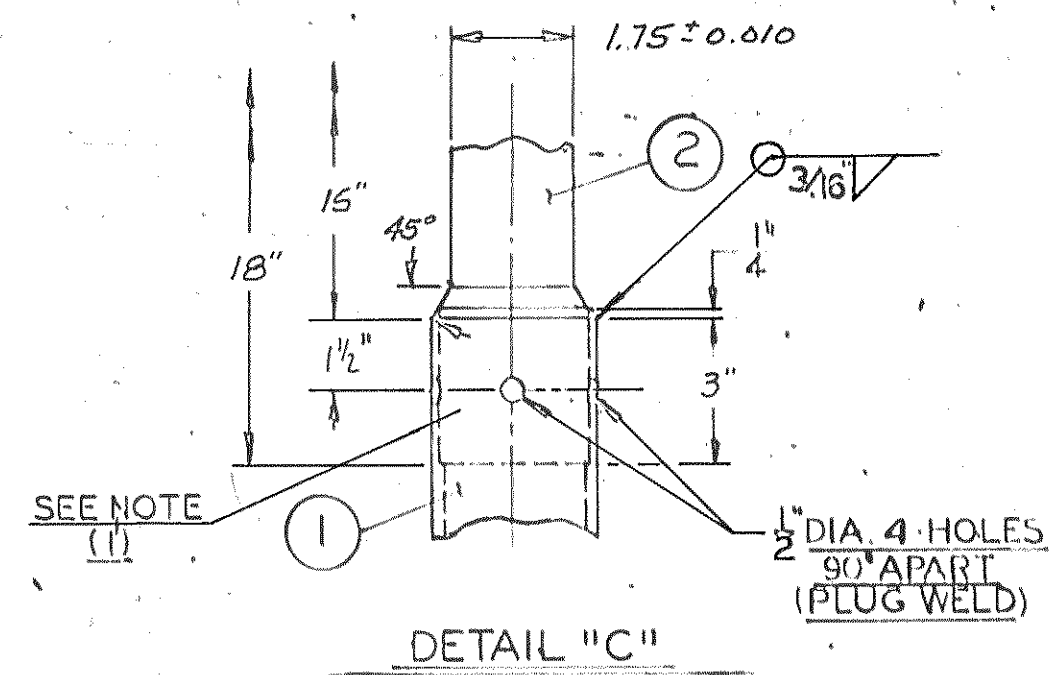
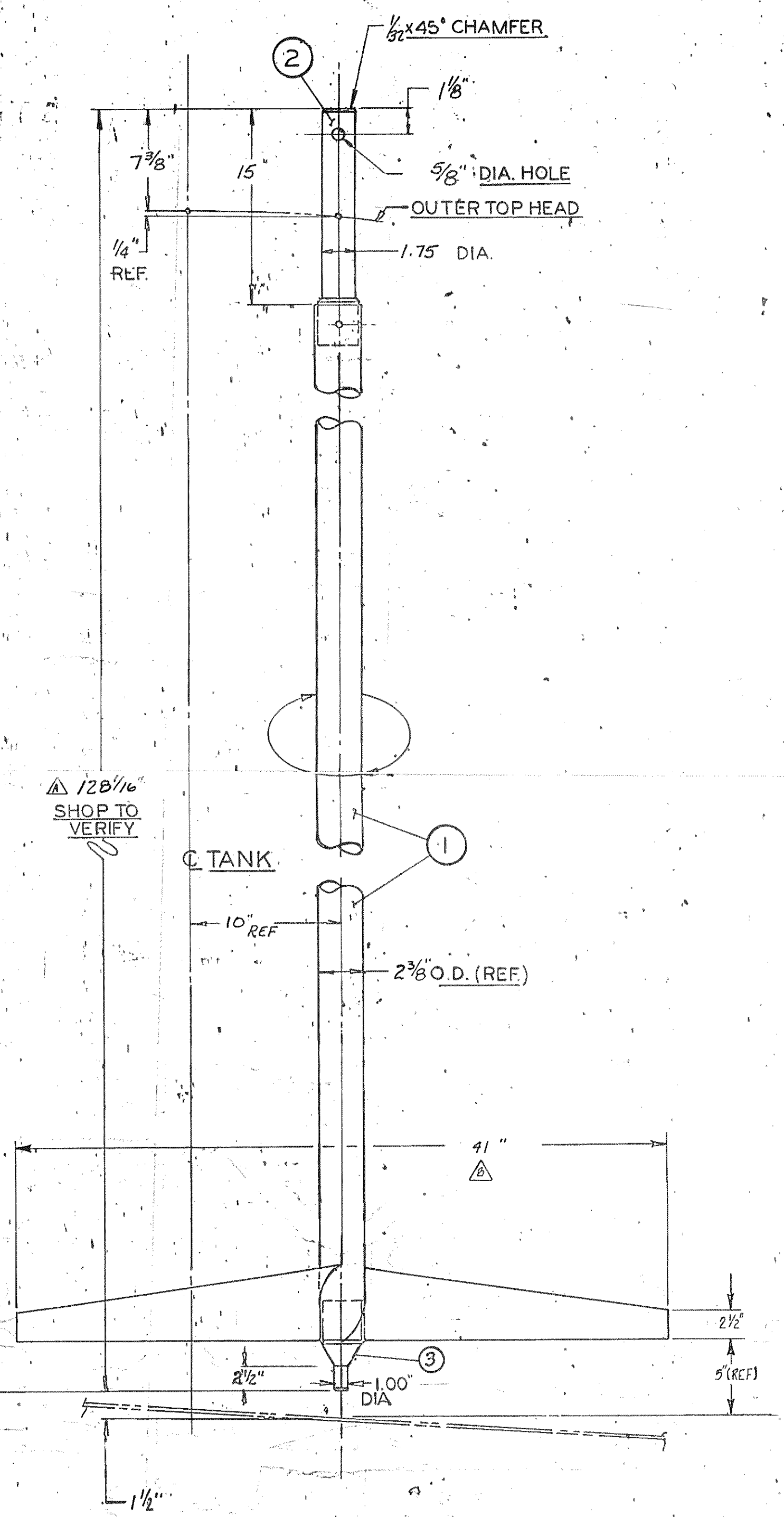
DRAWN BY <b>A.R. CARRA</b>	SALES ORDER <b>F26787</b>	MODEL(S) <b>D</b>
DATE <b>2-3-88</b>	<b>1 THRU 4</b>	
CHECKED BY <b>LOWRANCE</b>	SCALE <b>N.T.S.</b>	SIZE <b>---</b>
DATE <b>2-3-88</b>		

**PAUL MUELLER COMPANY**  
P O BOX 828 / SPRINGFIELD MISSOURI U.S.A. 65801  
TELEPHONE (417) 831 3000 / CABLE MUELLER  
TELEX 43-8427

TITLE  
**AGITATOR TRUSS ASSY**

DRAWING NO.  
**FPO4483 - B**

ITEM NO.	NO. REQ'D.	PART NO.	DESCRIPTION	DRAWING NO.
1	1		AGITATOR SHAFT. 2" SCH 40 304 $\frac{1}{2}$ PIPE	
2	1		UPPER SHAFT. 304 $\frac{1}{2}$	DET. C
3	1		LOWER SHAFT. 304 $\frac{1}{2}$	DET. B
4	2		BLADES. .1874 THK 304 $\frac{1}{2}$	DET. D
5	1	9901185	SUPPORT ASSY GUIDE - 3 LEGS 304 $\frac{1}{2}$	9901185-B
6	1	9813251	GUIDE, AGITATOR BOTTOM (GIG NYLON)	9000653-A



- NOTES -
- BOTH UPPER & LOWER SHAFTS TO BE MACHINED FOR A LIGHT PRESS FIT TO ITEM #1, AS SHOWN.
  - SHAFT MUST BE CONCENTRIC W/A RUNOUT OF  $\pm .015$
  - ALL DIMENSIONS ARE IN INCHES.
  - SEE MAIN TANK DWG FOR MAT'L AND WELD FINISHES.

ALL MATERIALS ON COMPONENT PARTS CALLED OUT ON THIS DRAWING SHALL BE AS SPECIFIED ON APPROVED EQUAL.				
This drawing and any print thereof is the property of the PAUL MUELLER CO. Springfield, Mo. and is subject to return on request by this company. The information shown is confidential and the recipient by accepting this drawing agrees not to use any information contained thereon in any manner which will be detrimental to the Paul Mueller Co.		DRAWN BY A.R. CARRA DATE 1-18-88 CHECKED BY Lowrance DATE 2-3-88	SALES ORDER F-26787 17REV4 SCALE N.T.S. SIZE 2000 GAL.	MODELIST D PAUL MUELLER COMPANY P.O. BOX 828 / SPRINGFIELD MISSOURI U.S.A. 65901 TELEPHONE (417) 831-3000 / CABLE MUELLER TELEX 43-0427
REV. B 41" WAS 53" REV. A 128 1/16" WAS 143 5/8"	BY FAL 7/29/89 ALC 2/18/88	DATE DATE	TITLE AGITATOR ASS'Y & DETAILS	
REVISIONS				

SERIA FROM DWG NO  
FPO4439-C  
FPO4466-C

DRAWING NO.  
FPO4466 - C