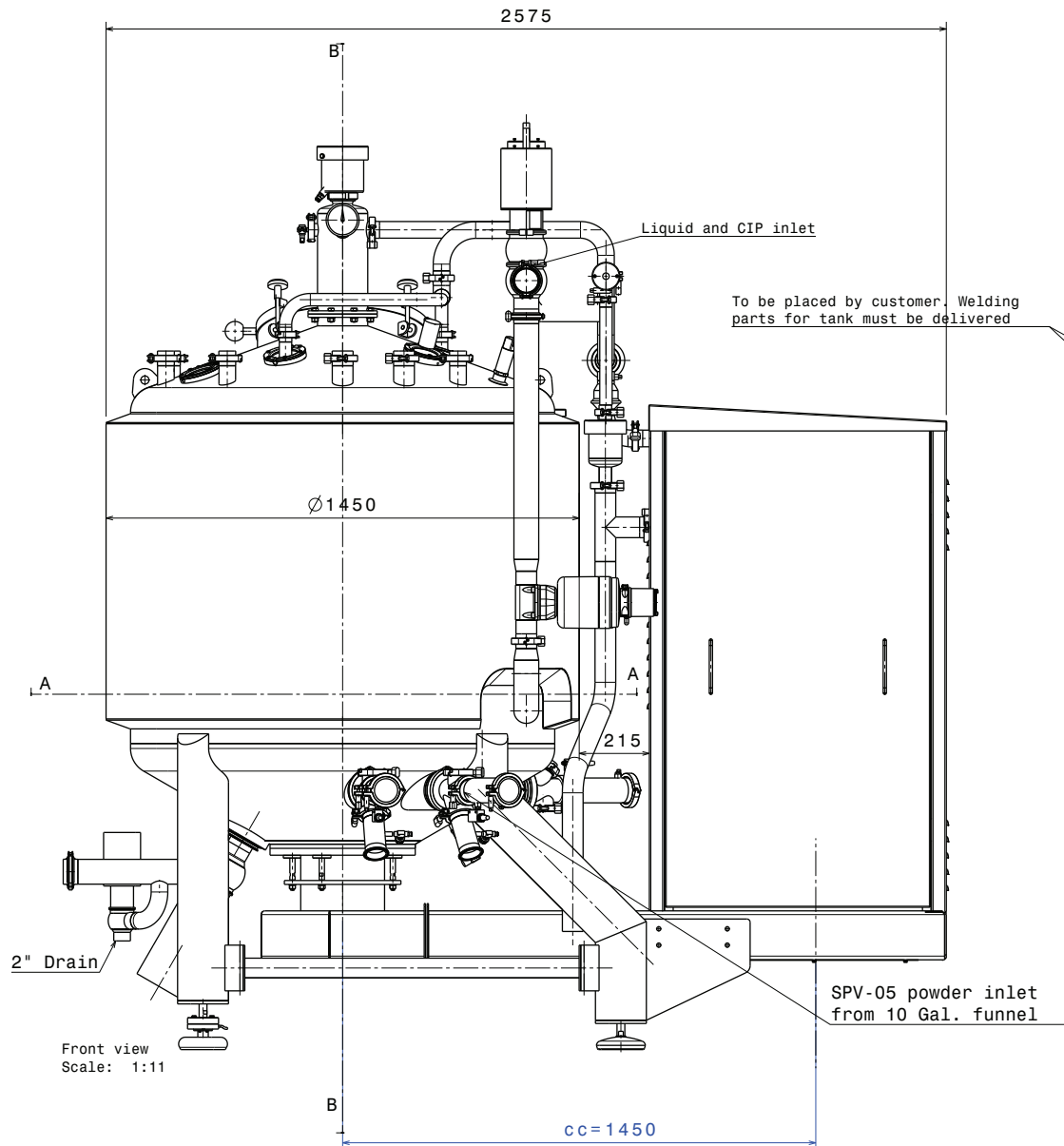
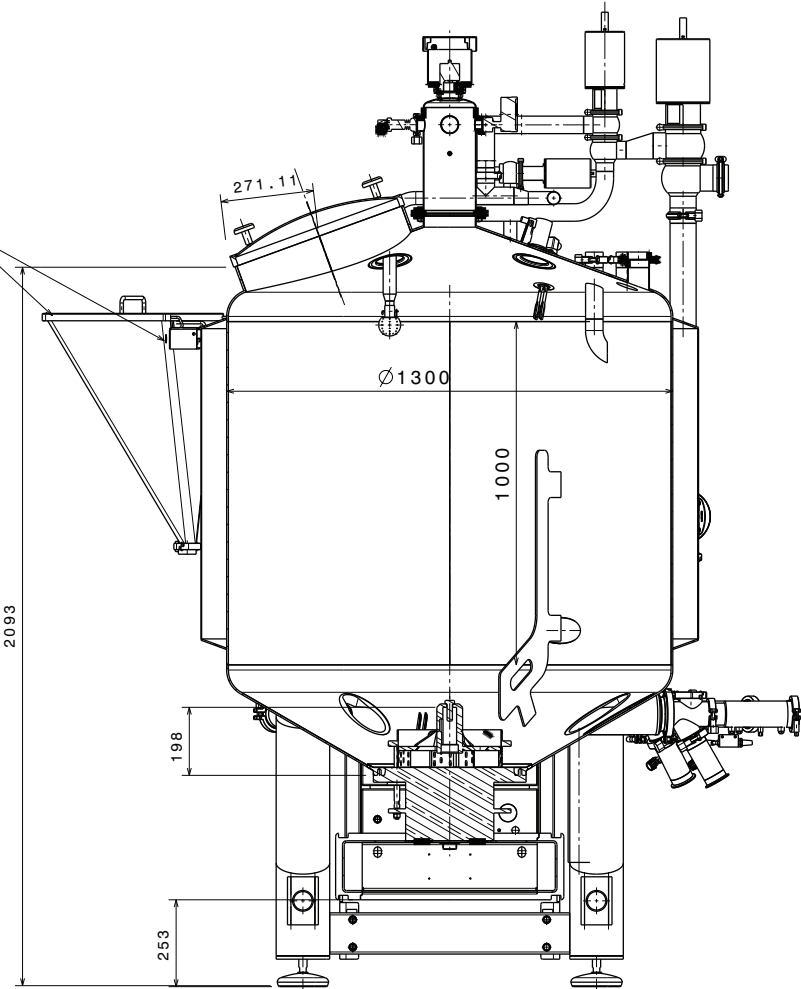


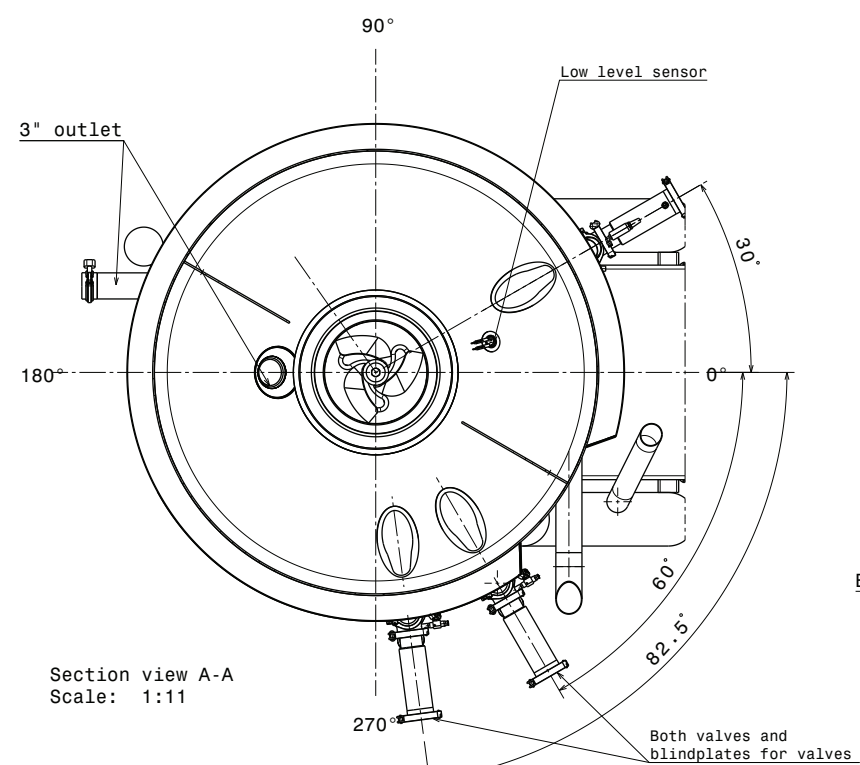
Right view  
Scale: 1:11



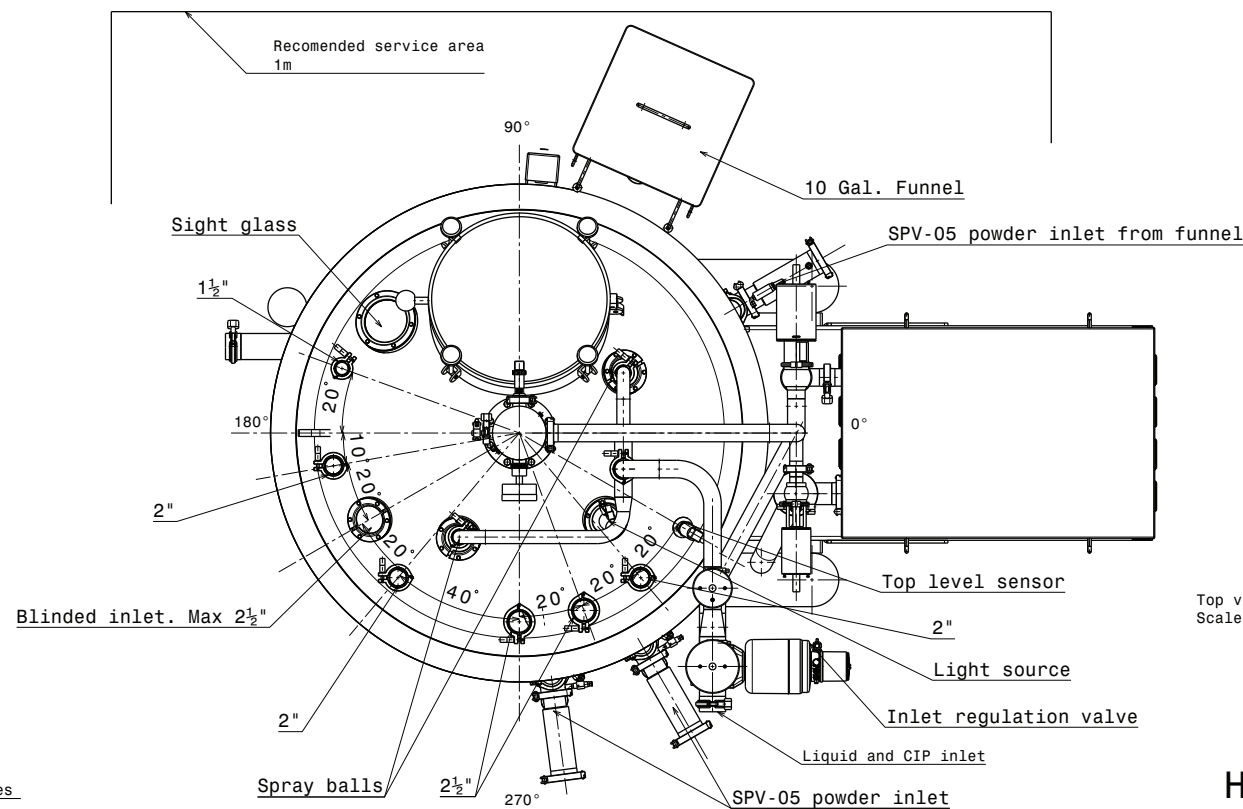
Front view  
Scale: 1:11



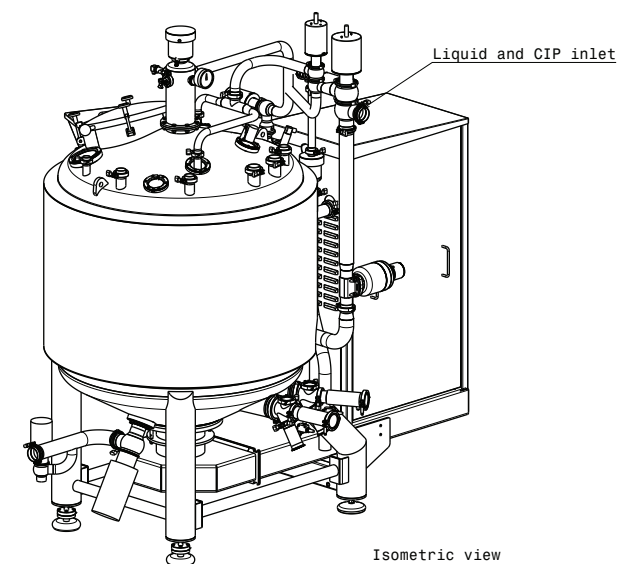
Section view B-B  
Scale: 1:11



Section view A-A  
Scale: 1:11



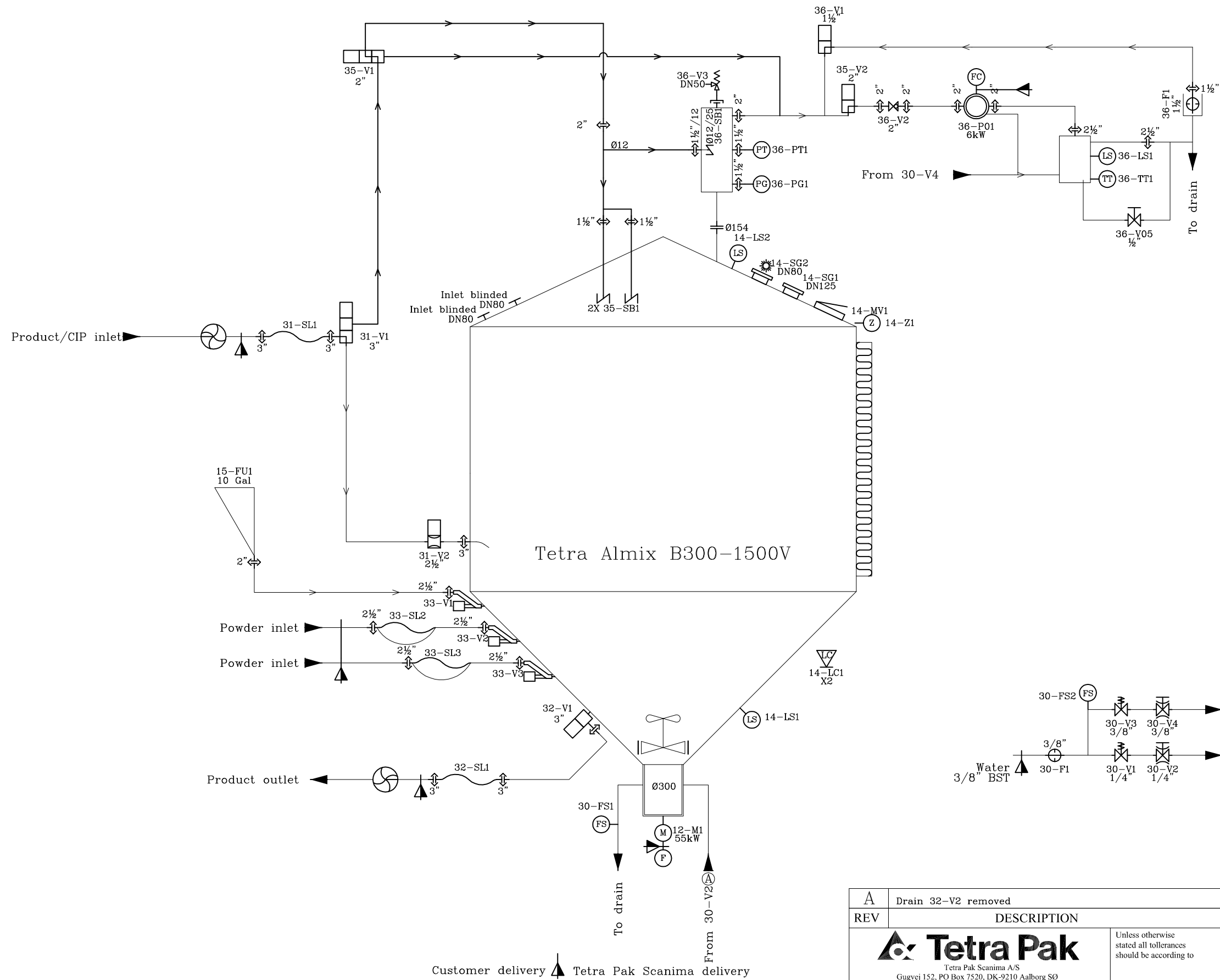
Top view  
Scale: 1:11



Isometric view  
Scale: 1:20

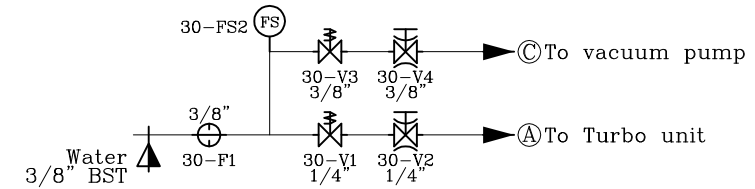
Huntington

Designed By f1	Title Tetra Almix B300-1500V Huntington	Part/Product number CA3024779	Revision a.09
Design Date 21.07.11	Weight [Kg]	Stock No. CD3031155	
Released By	Case No. 14913	Part Type made	Sheet 1/1
Released date	Material	Section	Size A1
Surface finish:	Part Type made	Section	Size A1
Not Stated tol: ISO 2768-1 c (coarse)			



Equipment

14913	907122113	- Huntington
15010	907122103	- Sikeston
15010-1	907122103	- Sikeston
15011	907122060	- Henderson



Customer delivery ▲ Tetra Pak Scanima delivery

Piping ISO standard

A	Drain 32-V2 removed	110929	FL		
REV	DESCRIPTION	YEAR MONTH DAY	SIGN	CHECKED	APPROVED
	<p>Tetra Pak Scanima A/S Gugvej 152, PO Box 7520, DK-9210 Aalborg SO Ph. +45 96 33 10 00 / Fax +45 96 33 10 12 www.scanima.com</p>	SURFACE TREATMENT ACC. TO		DRAWN FL	
		YEAR MONTH DAY		CHECKED	
		2011.07.01		APPROVED	
TITLE	FLOW SHEET FOR TETRA ALMIX TYPE B300-1500V	DRAWING NUMBER	2010436	SIZE	SCALE
		EQUIPMENT		Material ( X if separate part-list )	